

## Product datasheet for **AP01468PU-M**

### **COPZ1 Rabbit Polyclonal Antibody**

#### **Product data:**

Product Type:	Primary Antibodies
Applications:	IHC, WB
Recommended Dilution:	<b>Western Blot:</b> 1/500-1/1000. <b>Immunohistochemistry on paraffin sections:</b> 1/50-1/200.
Reactivity:	Human, Mouse
Host:	Rabbit
Clonality:	Polyclonal
Specificity:	COP $\zeta$ 1 antibody detects endogenous levels of COP $\zeta$ 1 protein. (region surrounding Ile48)
Formulation:	Phosphate buffered saline (PBS) with 0.05% sodium azide, approx. pH 7.2. State: Aff - Purified State: Liquid purified Ig fraction
Concentration:	1.0 mg/ml
Purification:	Affinity chromatography
Conjugation:	Unconjugated
Storage:	Store the antibody undiluted at 2-8°C for one month or (in aliquots) at -20°C for longer. Avoid repeated freezing and thawing.
Stability:	Shelf life: one year from despatch.
Predicted Protein Size:	~ 20 kDa
Gene Name:	coatamer protein complex subunit zeta 1
Database Link:	<a href="#">Entrez Gene 56447 Mouse</a> <a href="#">Entrez Gene 22818 Human</a> <a href="#">P61923</a>



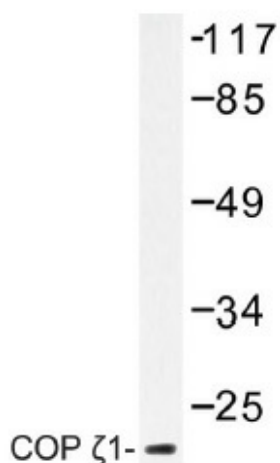
[View online »](#)

**Background:**

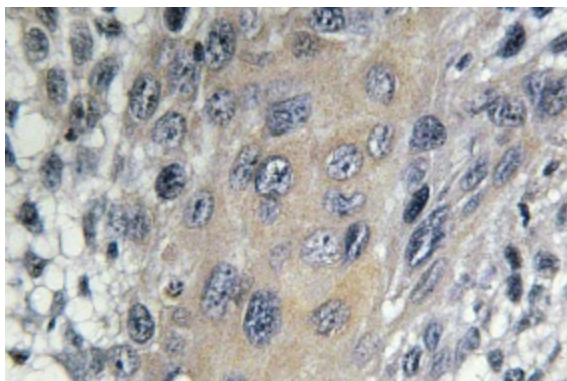
Membrane and vesicular trafficking in the early secretory pathway are mediated by non-Clathrin COP (coat protein) I-coated vesicles. COPI-coated vesicles mediate retrograde transport from the Golgi back to the ER and intra-Golgi transport. The cytosolic precursor of the COPI coat, the heptameric coatamer complex, is composed of two subcomplexes. The first consists of the COPB, COPG, COPD and COPZ1 subunits (also known as  $\beta$ -COP,  $\gamma$ -COP,  $\delta$ -COP and  $\zeta$ -1 COP, respectively), which are distantly homologous to AP Clathrin adaptor subunits. The second consists of the COPA, COPP and COPE subunits (also known as  $\alpha$ -COP, COPP and  $\epsilon$ -COP, respectively).

**Synonyms:**

COPZ1, COPZ, CGI-120, HSPC181, Zeta-1 COP

**Product images:**


Western blot (WB) analysis of COP Z1 antibody (Cat.-No.: [AP01468PU-N]) in extracts from Jurkat cells.



Immunohistochemistry (IHC) analysis of COP Z1 antibody (Cat.-No.: [AP01468PU-N]) in paraffin-embedded human cervix carcinoma tissue.