

Product datasheet for **AP01467PU-M**

CLCC1 Rabbit Polyclonal Antibody

Product data:

Product Type:	Primary Antibodies
Applications:	IF, WB
Recommended Dilution:	Western Blot: 1/500-1/1000. Immunofluorescence: 1/50-1/200.
Reactivity:	Human
Host:	Rabbit
Clonality:	Polyclonal
Specificity:	This antibody detects endogenous levels of CLCC1 protein. (region surrounding Asp429)
Formulation:	Phosphate buffered saline (PBS) pH~7.2 State: Aff - Purified State: Liquid purified Ig fraction (> 95% pure by SDS-PAGE) Preservative: 0.05% Sodium Azide
Concentration:	1.0 mg/ml
Purification:	Affinity Chromatography using epitope-specific immunogen
Conjugation:	Unconjugated
Storage:	Store undiluted at 2-8°C for one month or (in aliquots) at -20°C for longer. Avoid repeated freezing and thawing.
Stability:	Shelf life: one year from despatch.
Predicted Protein Size:	~ 62 kDa
Gene Name:	chloride channel CLIC like 1
Database Link:	Entrez Gene 23155 Human Q96S66

[View online »](#)

Background:

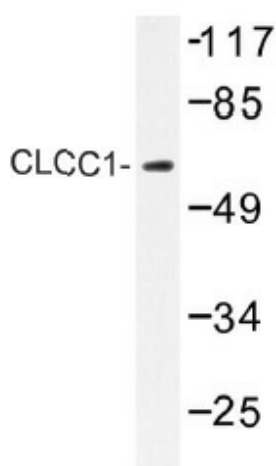
Chloride channels (CLCs) regulate cellular traffic of chloride ions, a critical component of all living cells. CLCs are involved in membrane potential stabilization, signal transduction, cell volume regulation and organic solute transport. CLCC1 (Chloride channel CLIC-like protein 1), also known as MCLC (Mid-1-related chloride channel) or KIAA0761, is a 551 amino acid multi-pass membrane protein that belongs to the chloride channel MCLC family. CLCC1 is related to the *Saccharomyces cerevisiae* protein Mid-1 and is believed to function as an intracellular chloride channel that is expressed in lung, brain, muscle, liver and testis. Localizing to intracellular compartments such as the Golgi apparatus, the endoplasmic reticulum (ER) and the nuclear envelope, CLCC1 is expressed as four isoforms due to alternative splicing events, namely hMCLC-1, hMCLC-2, hMCLC-3 and hMCLC-4.

Synonyms:

KIAA0761, MCLC

Protein Families:

Ion Channels: Other, Transmembrane

Product images:


Western blot analysis of CLCC1 Antibody (Cat.-No [AP01467PU-N]) in extracts from RAW264.7 cell.