

Product datasheet for **AP01465PU-N**

CPN1 Rabbit Polyclonal Antibody

Product data:

Product Type:	Primary Antibodies
Applications:	WB
Recommended Dilution:	Western Blot: 1/500-1/1000.
Reactivity:	Human
Host:	Rabbit
Clonality:	Polyclonal
Specificity:	CPN cat antibody detects endogenous levels of CPN cat protein. (region surrounding Gln452)
Formulation:	Phosphate buffered saline (PBS) with 0.05% sodium azide, approx. pH 7.2. State: Aff - Purified State: Liquid purified Ig fraction
Concentration:	1.0 mg/ml
Purification:	Affinity chromatography
Conjugation:	Unconjugated
Storage:	Store the antibody undiluted at 2-8°C for one month or (in aliquots) at -20°C for longer. Avoid repeated freezing and thawing.
Stability:	Shelf life: one year from despatch.
Predicted Protein Size:	~ 52 kDa
Gene Name:	carboxypeptidase N subunit 1
Database Link:	Entrez Gene 1369 Human P15169



[View online »](#)

Background:

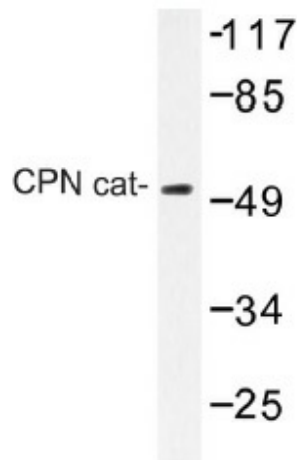
Carboxypeptidase N (arginine carboxypeptidase or CPN) cleaves basic amino acid residues from the carboxy terminal of peptides and proteins. The enzyme plays a central role in regulating the biologic activity of peptides such as kinins and anaphylatoxins, and therefore is also known as kininase-1 and anaphylatoxin inactivator. CPN is a tetrameric complex consisting of two identical regulatory subunits (CPN reg) and two identical catalytic subunits (CPN cat). The two glycosylated CPN reg subunits protect the two CPN cat subunits and keep them in the circulation. CPN reg is a member of the leucinerich repeat family of proteins and the gene which encodes CPN reg maps to human chromosome 8p22-p23. CPN cat is a member of the regulatory B-type carboxypeptidase group and the gene which encodes CPN cat maps to human chromosome 10.

Synonyms:

CPN, CPN1, ACBP, Kininase-1, Serum carboxypeptidase N, Anaphylatoxin inactivator, Plasma carboxypeptidase B, Lysine carboxypeptidase, Arginine carboxypeptidase, SCPN

Protein Families:

Druggable Genome, Protease, Secreted Protein

Product images:

Western blot (WB) analysis of CPN cat antibody (Cat.-No.: AP01465PU-N) in extracts from RAW264.7 cell