

## Product datasheet for **AP01457PU-S**

### TGF beta Receptor I (TGFBR1) Rabbit Polyclonal Antibody

#### Product data:

Product Type:	Primary Antibodies
Applications:	WB
Recommended Dilution:	<b>Western Blot:</b> 1/500-1/1000.
Reactivity:	Human, Mouse, Rat
Host:	Rabbit
Clonality:	Polyclonal
Immunogen:	Synthetic peptide, corresponding to amino acids 150-200 of Human TGF $\beta$ RI.
Specificity:	This antibody detects endogenous levels of TGF $\beta$ RI protein (region surrounding Glu161).
Formulation:	Phosphate buffered saline (PBS), pH~7.2 State: Aff - Purified State: Liquid purified Ig fraction (> 95% by SDS-PAGE) Preservative: 15 mM Sodium Azide
Concentration:	1.0 mg/ml
Purification:	Affinity Chromatography using epitope-specific immunogen
Conjugation:	Unconjugated
Storage:	Store undiluted at 2-8°C for one month or (in aliquots) at -20°C for longer. Avoid repeated freezing and thawing.
Stability:	Shelf life: one year from despatch.
Predicted Protein Size:	~ 55 kDa
Gene Name:	transforming growth factor beta receptor 1
Database Link:	<a href="#">Entrez Gene 7046 Human P36897</a>



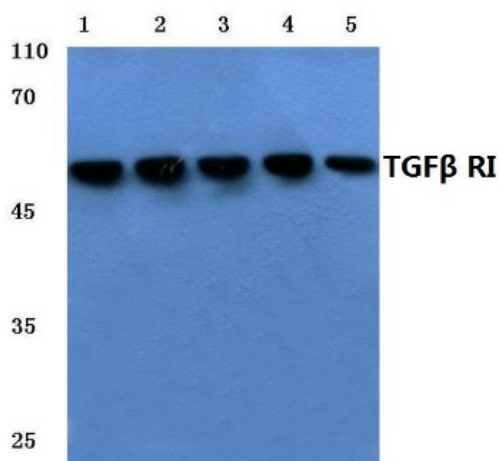
[View online »](#)

**Background:**

Three members of the TGF beta family, TGF beta 1, TGF beta 2 and TGF beta 3, are known in mammals. TGF betas mediate their activity by high affinity binding to the type 2 receptor, which requires both its kinase activity and association with members of a series of related type 1 receptors called activin receptor like kinase (ALK) 1 to 6. Of these, only ALK5 has been shown to represent a functional TGF beta type 1 receptor, but only ALK2 and ALK4 bind activin with high affinity. TGF beta R3 binds TGF beta and retains TGF beta for presentation to the signaling receptors.

**Synonyms:**

TGF-beta receptor type-1, TGF-beta type I receptor, TbetaR-I, TGFR-1, ALK5, SKR4

**Product images:**

Western blot analysis of TGFβ RI Antibody at 1/500 dilution. Lane 1: HeLa whole cell lysate. Lane 2: LO2 whole cell lysate. Lane 3: Raw264.7 whole cell lysate. Lane 4: Mouse kidney tissue lysate. Lane 5: Rat heart tissue lysate.