

## Product datasheet for **AP01451PU-M**

### GRK1 Rabbit Polyclonal Antibody

#### Product data:

Product Type:	Primary Antibodies
Applications:	IHC, WB
Recommended Dilution:	<b>Western Blot:</b> 1/500-1/1000. <b>Immunohistochemistry on paraffin sections:</b> 1/50-1/200.
Reactivity:	Human, Mouse, Rat
Host:	Rabbit
Clonality:	Polyclonal
Specificity:	GRK1 antibody detects endogenous levels of GRK1 protein. (region surrounding Ala17)
Formulation:	Phosphate buffered saline (PBS) with 0.05% sodium azide, approx. pH 7.2. State: Aff - Purified State: Liquid purified Ig fraction
Concentration:	1.0 mg/ml
Purification:	Affinity chromatography
Conjugation:	Unconjugated
Storage:	Store the antibody undiluted at 2-8°C for one month or (in aliquots) at -20°C for longer. Avoid repeated freezing and thawing.
Stability:	Shelf life: one year from despatch.
Predicted Protein Size:	~ 63 kDa
Gene Name:	G protein-coupled receptor kinase 1
Database Link:	<a href="#">Entrez Gene 24013 Mouse</a> <a href="#">Entrez Gene 81760 Rat</a> <a href="#">Entrez Gene 6011 Human Q15835</a>

[View online »](#)

**Background:**

Heterotrimeric G protein-mediated signal transduction is a dynamically regulated process with the intensity of signal decreasing over time despite the continued presence of the agonist. This phenomenon, referred to as agonist-mediated desensitization, involves phosphorylation of the receptor by two classes of enzymes. The first class is comprised of the second messenger-regulated kinases, such as c-AMP dependent protein kinase A and protein kinase C. The second class includes the G protein-coupled receptor kinases (GRKs). At least seven members of the GRK family have been identified. These include rhodopsin kinase (GRK 1 $\alpha$  and  $\beta$ ); two forms of  $\beta$ -adrenergic receptor kinase: GRK 2 ( $\beta$ ARK,  $\beta$ ARK1) and GRK 3 ( $\beta$ ARK2); IT-11 (GRK 4); GRK 5; GRK 6; and GRK 7. Phosphorylation of receptors by GRKs appears to be strictly dependent on the receptor being in its agonist-activated state.

**Synonyms:**

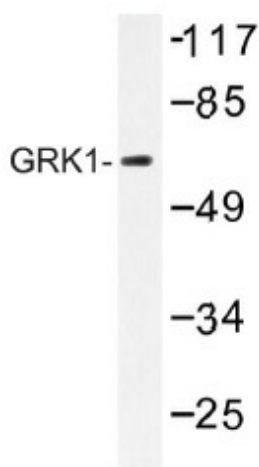
GRK1, RHOK, G protein-coupled receptor kinase 1

**Protein Families:**

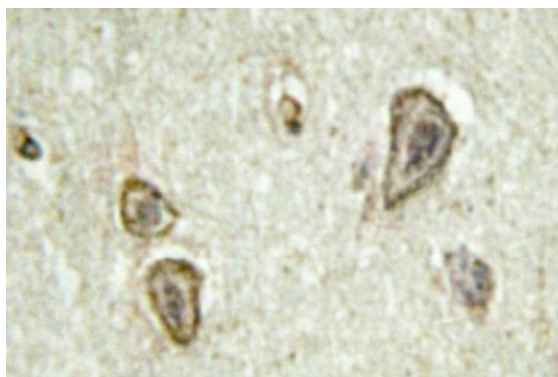
Druggable Genome, Protein Kinase

**Protein Pathways:**

Chemokine signaling pathway, Endocytosis

**Product images:**


Western blot (WB) analysis of GRK1 antibody (Cat.-No.: [AP01451PU-N]) in extracts from HUVEC cells.



Immunohistochemistry (IHC) analysis of GRK1 antibody (Cat.-No.: [AP01451PU-N]) in paraffin-embedded human brain tissue.