

Product datasheet for **AP01448PU-N**

PKC theta (PRKCQ) Rabbit Polyclonal Antibody

Product data:

| | |
|-------------------------|---|
| Product Type: | Primary Antibodies |
| Applications: | IHC, WB |
| Recommended Dilution: | Western Blot: 1/500-1/1000. Immunohistochemistry on paraffin sections: 1/50-1/200. |
| Reactivity: | Human, Mouse, Rat |
| Host: | Rabbit |
| Clonality: | Polyclonal |
| Specificity: | PKC θ antibody detects endogenous levels of PKC θ protein. (region surrounding Gly532) |
| Formulation: | Phosphate buffered saline (PBS) with 15 mM sodium azide, approx. pH 7.2. State: Aff - Purified State: Liquid purified Ig fraction |
| Concentration: | 1.0 mg/ml |
| Purification: | Affinity chromatography |
| Conjugation: | Unconjugated |
| Storage: | Store the antibody undiluted at 2-8°C for one month or (in aliquots) at -20°C for longer. Avoid repeated freezing and thawing. |
| Stability: | Shelf life: one year from despatch. |
| Predicted Protein Size: | ~ 80 kDa |
| Gene Name: | protein kinase C theta |
| Database Link: | Entrez Gene 5588 Human Q04759 |



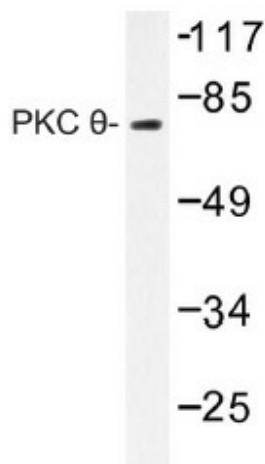
[View online »](#)

Background:

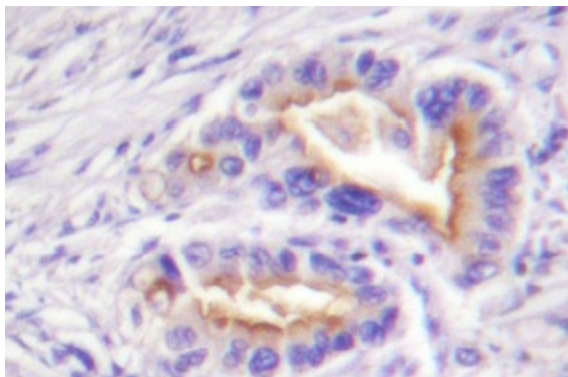
Members of the protein kinase C (PKC) family play a key regulatory role in variety of cellular functions including cell growth and differentiation, gene expression, hormone secretion and membrane function. PKCs were originally identified as serine/threonine protein kinases whose activity was dependent on calcium and phospholipids. Diacylglycerols (DAG) and tumor promoting phorbol esters bind to and activate PKC. PKCs can be subdivided into at least two major classes including conventional (c) PKC isoforms (α , β I, β II and γ) and novel (n) PKC isoforms (δ , ϵ , ζ , η and θ). Patterns of expression for each PKC isoform differs among tissues and PKC family members exhibit clear differences in their cofactor dependencies. For instance, the kinase activities of nPKC δ and ϵ are independent of Ca^{++} . On the other hand, nPKC and ϵ , as well as all of the cPKC members, possess phorbol ester-binding activities and kinase activities.

Synonyms:

PKC theta, PKC-theta, nPKC-theta, Protein kinase C theta type

Product images:

Western blot (WB) analysis of PKC θ antibody (Cat.-No.: AP01448PU-N) in extracts from 293 cells.



Immunohistochemistry (IHC) analyzes of PKC θ antibody (Cat.-No.: AP01448PU-N) in paraffin-embedded human lung carcinoma tissue.