

Product datasheet for **AP01447PU-S**

PAK4 Rabbit Polyclonal Antibody

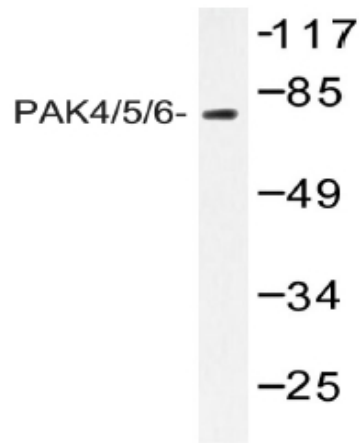
Product data:

Product Type:	Primary Antibodies
Applications:	WB
Recommended Dilution:	Western Blot: 1/500-1/1000.
Reactivity:	Human, Mouse, Rat
Host:	Rabbit
Clonality:	Polyclonal
Specificity:	PAK4/5/6 antibody detects endogenous levels of PAK4/5/6 protein. (region surrounding Val469)
Formulation:	Phosphate buffered saline (PBS) with 0.05% Sodium Azide as preservative, approx. pH 7.2. State: Aff - Purified State: Liquid purified Ig fraction (> 95% pure by SDS-PAGE).
Concentration:	1.0 mg/ml
Purification:	Affinity Chromatography using epitope-specific immunogen.
Conjugation:	Unconjugated
Storage:	Store the antibody undiluted at 2-8°C for one month or (in aliquots) at -20°C for longer. Avoid repeated freezing and thawing.
Stability:	Shelf life: one year from despatch.
Predicted Protein Size:	~ 80 kDa
Gene Name:	p21 (RAC1) activated kinase 4
Database Link:	Entrez Gene 70584 Mouse Entrez Gene 292756 Rat Entrez Gene 10298 Human O96013



[View online »](#)

Background:	Three recently identified isoforms of serine/threonine kinases, designated alphaPAK p68, betaPAK p65 and gammaPAK p62, have been shown to exhibit a high degree of sequence homology with the <i>S. cerevisiae</i> kinase STE20, involved in pheromone signaling. The alpha, beta and gammaPAK isoforms complex specifically with Rac1 and Cdc42 in their active GTP bound state, inhibiting their intrinsic GTPase activity leading to their autophosphorylation. Once phosphorylated and their affinity for Rac/Cdc42 reduced, the PAK isoforms disassociate from the complex to seek downstream substrates. One such putative substrate is MEK kinase, an upstream effector of MEK4 which is involved in the JNK signaling pathway. While the PAK isoforms interact in a GTP-dependent manner with Rac1 and Cdc42, they do not interact with Rho.
Synonyms:	PAK 4, PAK-4, p21-activated kinase 4, KIAA1142, p21-activated kinase 7, PAK-7, p21-activated kinase 5, PAK-5, KIAA1264 , p21-activated kinase 6, PAK-6
Protein Families:	Druggable Genome, Protein Kinase
Protein Pathways:	Axon guidance, ErbB signaling pathway, Focal adhesion, Regulation of actin cytoskeleton, Renal cell carcinoma, T cell receptor signaling pathway

Product images:

Western blot (WB) analysis of PAK4/5/6 antibody (Cat.-No.: [AP01447PU-N]) in extracts from K562 cell treated with PMA 125ng/ml 30'.