

## Product datasheet for **AP01445PU-M**

### **MCSF Receptor (CSF1R) Rabbit Polyclonal Antibody**

#### **Product data:**

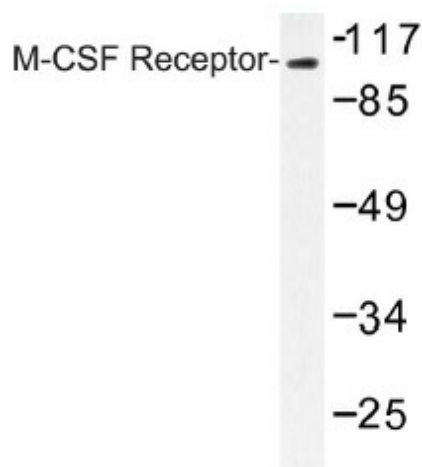
Product Type:	Primary Antibodies
Applications:	IHC, WB
Recommended Dilution:	<b>Western Blot:</b> 1/500-1/1000. <b>Immunohistochemistry on paraffin sections:</b> 1/50-1/200.
Reactivity:	Human, Mouse, Rat
Host:	Rabbit
Clonality:	Polyclonal
Specificity:	M-CSF Receptor antibody detects endogenous levels of M-CSF Receptor protein. (region surrounding Gln718)
Formulation:	Phosphate buffered saline (PBS) with 0.05% sodium azide, approx. pH 7.2. State: Aff - Purified State: Liquid purified Ig fraction
Concentration:	1.0 mg/ml
Purification:	Affinity chromatography
Conjugation:	Unconjugated
Storage:	Store the antibody undiluted at 2-8°C for one month or (in aliquots) at -20°C for longer. Avoid repeated freezing and thawing.
Stability:	Shelf life: one year from despatch.
Predicted Protein Size:	Predicted band: ~108 kDa; Observed band: ~130 kDa
Gene Name:	colony stimulating factor 1 receptor
Database Link:	<a href="#">Entrez Gene 12978 Mouse</a> <a href="#">Entrez Gene 307403 Rat</a> <a href="#">Entrez Gene 1436 Human</a> <a href="#">P07333</a>



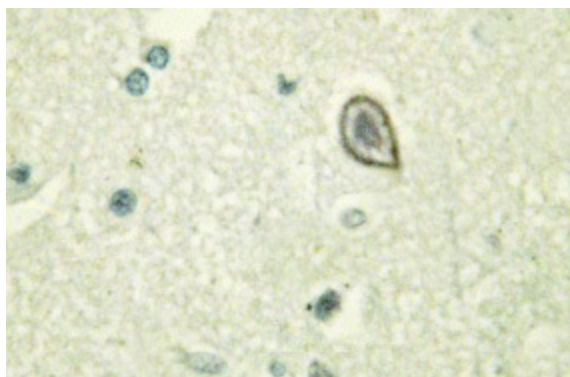
[View online »](#)

<b>Background:</b>	This protein tyrosine kinase transmembrane receptor is the receptor for colony stimulating factor 1, a cytokine which controls the production, differentiation, and function of macrophages. This receptor mediates most if not all of the biological effects of this cytokine. Ligand binding activates the receptor kinase through a process of oligomerization and transphosphorylation. The encoded protein is a member of the CSF1/PDGF receptor family of tyrosine protein kinases and contains 5 immunoglobulin like C2 type domains. CD115 is expressed by cells of the monocytic lineage and by progenitor cells. Mutations in this gene have been associated with a predisposition to myeloid malignancy.
<b>Synonyms:</b>	CSF-1-R, Fms proto-oncogene, c-fms, CSF1R, FMS, Macrophage colony-stimulating factor 1 receptor
<b>Protein Families:</b>	Druggable Genome, Protein Kinase, Transmembrane
<b>Protein Pathways:</b>	Cytokine-cytokine receptor interaction, Endocytosis, Hematopoietic cell lineage, Pathways in cancer

### Product images:



Western blot (WB) analysis of M-CSF Receptor antibody (Cat.-No.: [AP01445PU-N]) in extracts from HMCf7 cells.



Immunohistochemistry (IHC) analyzes of M-CSF Receptor antibody (Cat.-No.: [AP01445PU-N]) in paraffin-embedded human brain tissue.