

Product datasheet for **AP01441PU-M**

TRH Receptor (TRHR) Rabbit Polyclonal Antibody

Product data:

Product Type:	Primary Antibodies
Applications:	IF, WB
Recommended Dilution:	Western Blot: 1/500-1/1000. Immunofluorescence: 1/50-1/200.
Reactivity:	Human, Mouse, Rat
Host:	Rabbit
Clonality:	Polyclonal
Specificity:	TRH-R1 antibody detects endogenous levels of TRH-R1 protein. (region surrounding Trp234)
Formulation:	Phosphate buffered saline (PBS) with 0.05% sodium azide, approx. pH 7.2. State: Aff - Purified State: Liquid purified Ig fraction
Concentration:	1.0 mg/ml
Purification:	Affinity chromatography
Conjugation:	Unconjugated
Storage:	Store the antibody undiluted at 2-8°C for one month or (in aliquots) at -20°C for longer. Avoid repeated freezing and thawing.
Stability:	Shelf life: one year from despatch.
Predicted Protein Size:	~ 50 kDa
Gene Name:	thyrotropin releasing hormone receptor
Database Link:	Entrez Gene 7201 Human P34981



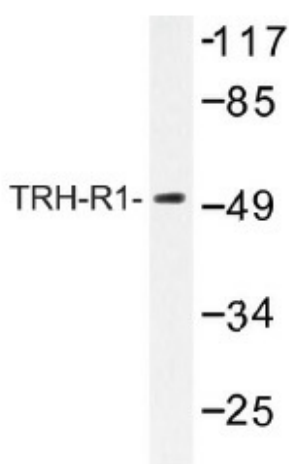
[View online »](#)

Background:

Thyrotrophin-releasing hormone (TRH) is a hypothalamic tripeptide that stimulates, via its receptor in the anterior pituitary gland, the release of thyrotrophin (TSH) and prolactin. The TRH receptors, TRH-R1 and TRH-R2, are G protein-coupled proteins containing seven transmembrane domains and other conserved regions. In rat, two isoforms exist, TRH-R (412) and TRH-R (387), that differ at their carboxy termini. TRH receptors are distributed throughout the central and peripheral nervous systems and are present in a variety of tissues. TRH-R2 displays 50% homology to TRH-R1 and is more restricted to the central nervous system than TRH-R1. Mutation in the TRH receptor gene is associated with isolated central hypothyroidism, a rare disorder characterized by insufficient TSH secretion resulting in low levels of thyroid hormones.

Synonyms:

TRH-R, Thyrotropin-releasing hormone receptor, Thyroliberin receptor 1

Product images:


Western blot (WB) analysis of TRH-R1 antibody (Cat.-No.: [AP01441PU-N]) in extracts from COS7 cells.