

Product datasheet for **AP01440PU-S**

Prostaglandin D2 Receptor (PTGDR) Rabbit Polyclonal Antibody

Product data:

Product Type:	Primary Antibodies
Applications:	IF, WB
Recommended Dilution:	Western Blot: 1/500-1/1000. Immunofluorescence: 1/50-1/200.
Reactivity:	Human
Host:	Rabbit
Clonality:	Polyclonal
Specificity:	PD2R antibody detects endogenous levels of PD2R protein. (region surrounding Glu301)
Formulation:	Phosphate buffered saline (PBS) with 0.05% sodium azide, approx. pH 7.2. State: Aff - Purified State: Liquid purified Ig fraction
Concentration:	1.0 mg/ml
Purification:	Affinity chromatography
Conjugation:	Unconjugated
Storage:	Store the antibody undiluted at 2-8°C for one month or (in aliquots) at -20°C for longer. Avoid repeated freezing and thawing.
Stability:	Shelf life: one year from despatch.
Predicted Protein Size:	~ 40 kDa
Gene Name:	prostaglandin D2 receptor (DP)
Database Link:	Entrez Gene 5729 Human Q13258



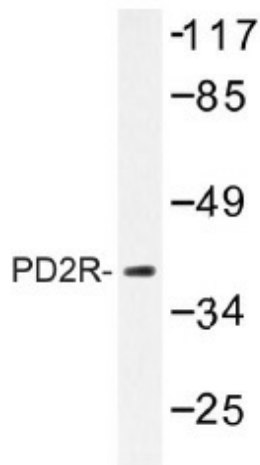
[View online »](#)

Background:

The prostaglandin D2 receptor is a member of the G-protein-coupled receptor (GPCR) family (subfamily: prostanoid). It has been shown to function as a prostanoid DP receptor. Its activity is mainly mediated by G-S proteins that stimulate adenylate cyclase resulting in an elevation of intracellular cAMP and Ca²⁺. Knockout studies in mice suggest that the ligand of this receptor, prostaglandin D2 (PGD₂), functions as a mast cell-derived mediator to trigger asthmatic responses. Prostaglandin D2 receptor has been reported to be expressed in human small intestine, colon (goblet cells), eye, and eosinophils. ESTs have been isolated from human brain libraries.

Synonyms:

Prostaglandin D2 receptor, PGD receptor, PGD2 receptor, Prostanoid DP receptor, ASRT1

Product images:

Western blot (WB) analysis of PD2R antibody (Cat.-No.: [AP01440PU-N]) in extracts from HepG2 cells.