

Product datasheet for **AP01431PU-M**

Somatostatin Receptor 1 (SSTR1) Rabbit Polyclonal Antibody

Product data:

Product Type:	Primary Antibodies
Applications:	IF, WB
Recommended Dilution:	Western Blot: 1/500-1/1000. Immunofluorescence: 1/50-1/200.
Reactivity:	Human, Mouse, Rat
Host:	Rabbit
Clonality:	Polyclonal
Immunogen:	Synthetic peptide, corresponding to amino acids 20-70 of Human SSTR1
Specificity:	This antibody detects endogenous levels of SSTR1 protein. (region surrounding asn48)
Formulation:	PBS with 0.05% Sodium Azide, approx. pH 7.2. State: Aff - Purified State: Liquid purified Ig fraction
Concentration:	1.0 mg/ml
Purification:	Affinity-chromatography using epitope-specific immunogen
Conjugation:	Unconjugated
Storage:	Store undiluted at 2-8°C for one month or (in aliquots) at -20°C for longer. Avoid repeated freezing and thawing.
Stability:	Shelf life: one year from despatch.
Predicted Protein Size:	~ 43 kDa
Gene Name:	somatostatin receptor 1
Database Link:	Entrez Gene 20605 Mouse Entrez Gene 25033 Rat Entrez Gene 6751 Human P30872



[View online »](#)

Background:

SSTRs (for somatostatin receptors) represent a family of G-protein-coupled receptors which mediate the diverse biological actions of somatostatin(SST). There are five distinct subtypes of SSTRs that bind two natural ligands, SST-14 and SST-28. SSTR2 gives rise to spliced variants, SSTR2A and 2B. SSTRs share common signaling pathways such as the ability to inhibit adenylyl cyclase via GTP binding proteins. Some of the subtypes are also coupled to tyrosine phosphatase (SSTR1,2), Ca²⁺ channels (SSTR2), Na⁺/H⁺ exchanger (SSTR1), PLA-2 (SSTR4), and MAP kinase (SSTR4). Individual target cells typically express more than one SSTR subtype and often all five isoforms. Subtypes of SSTR can form functional homo- and heterodimers.

Synonyms:

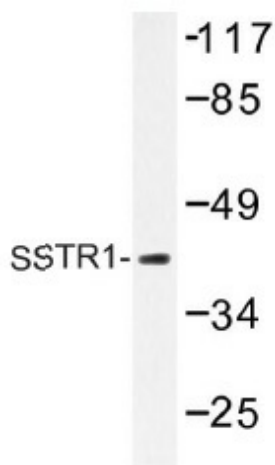
Somatostatin receptor type 1, SS-1-R, SS1-R, SS1R, SRIF-2

Protein Families:

Druggable Genome, GPCR, Transmembrane

Protein Pathways:

Neuroactive ligand-receptor interaction

Product images:


Western blot (WB) analysis of SSTR1 antibody (Cat.-No.: [AP01431PU-N]) in extracts from COS-7 cells.