

## Product datasheet for **AP01430PU-N**

### **RAI3 (GPC5A) Rabbit Polyclonal Antibody**

#### **Product data:**

Product Type:	Primary Antibodies
Applications:	WB
Recommended Dilution:	<b>Western Blot:</b> 1/500-1/1000.
Reactivity:	Human, Mouse, Rat
Host:	Rabbit
Clonality:	Polyclonal
Specificity:	RAI3 antibody detects endogenous levels of RAI3 protein. (region surrounding Leu179)
Formulation:	Phosphate buffered saline (PBS) with 15 mM sodium azide, approx. pH 7.2. State: Aff - Purified State: Liquid purified Ig fraction
Concentration:	1.0 mg/ml
Purification:	Affinity chromatography
Conjugation:	Unconjugated
Storage:	Store the antibody undiluted at 2-8°C for one month or (in aliquots) at -20°C for longer. Avoid repeated freezing and thawing.
Stability:	Shelf life: one year from despatch.
Predicted Protein Size:	~ 42 kDa
Gene Name:	G protein-coupled receptor class C group 5 member A
Database Link:	<a href="#">Entrez Gene 9052 Human</a> <a href="#">Q8NFJ5</a>



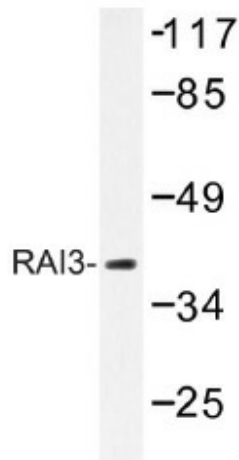
[View online »](#)

**Background:**

Retinoic acid-induced protein 3 (RAI3) is a transmembrane G protein-coupled receptor that affects many essential biological processes including embryogenesis, cell growth, differentiation and apoptosis. RAI3 may also be involved in maintaining homeostasis of epithelial cells. Retinoic acid receptors directly regulate RAI3 during its transcription in embryonal carcinoma differentiation. RAI3 expression is upregulated in most tumor cell lines that express mutant p53, suggesting that p53 interacts with the promoter of RAI3 and represses its expression at the beginning of apoptosis. RAI3 is a potential molecular target for diagnosing breast cancer; selective suppression of signals from RAI3 may have a place in breast cancer treatments.

**Synonyms:**

Retinoic acid-induced protein 3, G-protein coupled receptor C5A, PEIG-1, RAIG1, GPCR5A

**Product images:**

Western blot (WB) analysis of RAI3 antibody (Cat.-No.: AP01430PU-N) in extracts from LOVO cells.