

Product datasheet for **AP01428PU-S**

Prostaglandin I2 Receptor (PTGIR) Rabbit Polyclonal Antibody

Product data:

Product Type:	Primary Antibodies
Applications:	IF, WB
Recommended Dilution:	Western Blot: 1/500-1/1000. Immunofluorescence: 1/50-1/200.
Reactivity:	Human
Host:	Rabbit
Clonality:	Polyclonal
Specificity:	IP Receptor antibody detects endogenous levels of IP Receptor protein. (region surrounding His237)
Formulation:	Phosphate buffered saline (PBS) with 0.05% sodium azide, approx. pH 7.2. State: Aff - Purified State: Liquid purified Ig fraction
Concentration:	1.0 mg/ml
Purification:	Affinity chromatography
Conjugation:	Unconjugated
Storage:	Store the antibody undiluted at 2-8°C for one month or (in aliquots) at -20°C for longer. Avoid repeated freezing and thawing.
Stability:	Shelf life: one year from despatch.
Predicted Protein Size:	~ 45 kDa
Gene Name:	prostaglandin I2 (prostacyclin) receptor (IP)
Database Link:	Entrez Gene 5739 Human P43119



[View online »](#)

Background:

Cyclooxygenases metabolize arachidonate to five primary prostanoids: PGE2, PGF2 α , PGI2, TXA2 and PGD2. These lipid mediators interact with specific members of G protein-coupled prostanoid receptors, designated EP, FP, IP, TP and DP, respectively. The IP Receptor binds prostacyclin, PGI2, the main prostanoid synthesized by vascular tissues. First discovered in 1976, prostacyclin is involved in platelet aggregation inhibition, vasodilatation and cytoprotection, and either prostacyclin or its analogs are used in the treatment of hypertension. Upon binding to the IP Receptor, prostacyclin activates adenylate cyclase primarily through the Gas protein. The gene encoding the human IP Receptor is located on chromosome 19. It is expressed as a glycosylated and phosphorylated protein, which is abundantly expressed in vascular tissues such as aorta, lung, atrium and ventricle, as well as in kidney, thymus, spleen and neurons.

Synonyms:

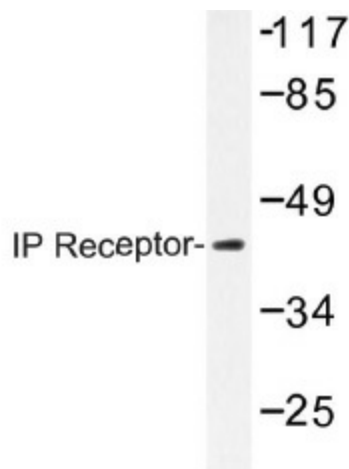
Prostanoid IP receptor, PGI receptor, Prostaglandin I2 receptor, PRIPR

Protein Families:

Druggable Genome, GPCR, Transmembrane

Protein Pathways:

Neuroactive ligand-receptor interaction, Vascular smooth muscle contraction

Product images:

Western blot (WB) analysis of IP Receptor antibody (Cat.-No.: [AP01428PU-N]) in extracts from K562 cells.