

## Product datasheet for **AP01426PU-N**

### Endothelin A Receptor (EDNRA) Rabbit Polyclonal Antibody

#### Product data:

Product Type:	Primary Antibodies
Applications:	IF, IHC, WB
Recommended Dilution:	<b>Western Blot:</b> 1/500-1/1000. <b>Immunofluorescence:</b> 1/50-1/200. <b>Immunohistochemistry on Paraffin Sections:</b> 1/50-1/200.
Reactivity:	Human, Mouse, Rat
Host:	Rabbit
Clonality:	Polyclonal
Immunogen:	Synthetic peptide, corresponding to amino acids 400-450 of Human ETAR.
Specificity:	This antibody detects endogenous levels of ETAR protein. (region surrounding Asp424)
Formulation:	Phosphate buffered saline (PBS), pH~7.2 State: Aff - Purified State: Liquid purified Ig fraction (> 95% pure by SDS-PAGE) Preservative: 0.05% Sodium Azide
Concentration:	1.0 mg/ml
Purification:	Affinity Chromatography using epitope-specific immunogen
Conjugation:	Unconjugated
Storage:	Store undiluted at 2-8°C for one month or (in aliquots) at -20°C for longer. Avoid repeated freezing and thawing.
Stability:	Shelf life: one year from despatch.
Predicted Protein Size:	~46 kDa
Gene Name:	endothelin receptor type A
Database Link:	<a href="#">Entrez Gene 1909 Human P25101</a>



[View online »](#)

**Background:**

Endothelin receptor A (ETAR), also known as EDNRA, ET1 receptor, ETA, EDN1 and ET-AR, is a member of the guanine-binding regulatory protein-coupled receptor family. ETAR binds endothelins and has the highest affinity for its ligand, ET1, as compared to the ETBR receptor. Both ET receptors, ETAR and ETBR, are activated by ET1, which results in inhibition of active lens sodiumpotassium transport. Activation of the ET receptors also causes an increase in cytoplasmic calcium concentration in cultured lens epithelial cells. In addition, ETAR induces arachidonic acid accumulation. ETAR has seven hydrophobic transmembrane domains and is expressed in aorta, lung, atrium, kidney, placenta and prostate. Specifically, placental vascular smooth muscle cells (PVSMCs) exclusively express ETAR.

**Synonyms:**

Endothelin-1 receptor, hET-AR, ETA-R, ET-A, EDNRA, ETA, ETRA

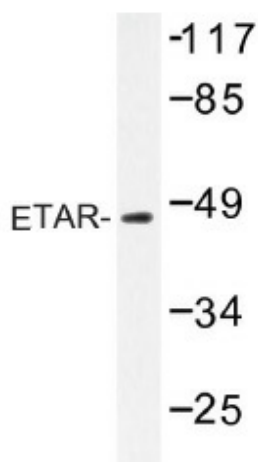
**Product images:**

Figure 1. Western blot (WB) analysis of ETAR antibody (Cat.-No.: AP01426PU-N) in extracts from COS7 cells.