

Product datasheet for **AP01425PU-N**

Frizzled 2 (FZD2) Rabbit Polyclonal Antibody

Product data:

Product Type:	Primary Antibodies
Applications:	IF, WB
Recommended Dilution:	Western Blot: 1/500-1/1000. Immunofluorescence: 1/50-1/200.
Reactivity:	Human, Mouse, Rat
Host:	Rabbit
Clonality:	Polyclonal
Immunogen:	Synthetic peptide, corresponding to amino acids 208-260 of Human Frizzled-2.
Specificity:	This antibody detects endogenous levels of Frizzled-2 protein. (region surrounding Glu240)
Formulation:	Phosphate buffered saline (PBS), pH~7.2 State: Aff - Purified State: Liquid purified Ig fraction (> 95% pure by SDS-PAGE) Preservative: 0.05% Sodium Azide
Concentration:	1.0 mg/ml
Purification:	Affinity Chromatography using epitope-specific immunogen
Conjugation:	Unconjugated
Storage:	Store undiluted at 2-8°C for one month or (in aliquots) at -20°C for longer. Avoid repeated freezing and thawing.
Stability:	Shelf life: one year from despatch.
Predicted Protein Size:	~65 kDa
Gene Name:	frizzled class receptor 2
Database Link:	Entrez Gene 2535 Human Q14332



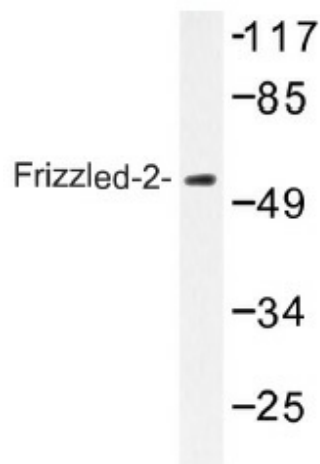
[View online »](#)

Background:

The frizzled gene, originally identified in *Drosophila melanogaster*, is involved in the development of tissue polarity. The frizzled proteins contain seven transmembrane domains, a cysteine-rich domain in the extracellular region and a carboxy-terminal Ser/Thr-XXX-Val motif. The proteins in this family function as receptors for Wnt and are generally coupled to G proteins. Frizzleds are members of the G protein-coupled receptor superfamily. Frizzled-2 is expressed in the fetal kidney and lung and in the adult ovary and colon. Frizzled-2 mediates the Wnt/cGMP/Ca²⁺ pathway. It binds Wnt proteins and signals by activating the release of stored calcium. Frizzled-2 expression is regulated by Angiotensin II. Activated frizzled-2 suppresses the activity of protein kinase G, and activates NFAT-dependent transcription, the phosphatidylinositol pathway and calcium sensitive enzymes.

Synonyms:

Fz-2, hFz2, FzE2

Product images:

Western blot analysis of Frizzled-2 antibody in extracts from HeLa cells.