

## Product datasheet for **AP01422PU-N**

### Dopamine Receptor D4 (DRD4) Rabbit Polyclonal Antibody

#### Product data:

Product Type:	Primary Antibodies
Applications:	IF, WB
Recommended Dilution:	<b>Western Blot:</b> 1/500-1/1000. <b>Immunofluorescence:</b> 1/50-1/200.
Reactivity:	Human, Mouse, Rat
Host:	Rabbit
Clonality:	Polyclonal
Specificity:	D4DR antibody detects endogenous levels of D4DR protein. (region surrounding Leu396)
Formulation:	Phosphate buffered saline (PBS), pH~7.2 containing 15 mM Sodium Azide as preservative. State: Aff - Purified State: Liquid purified Ig fraction (> 95% pure by SDS-PAGE).
Concentration:	1.0 mg/ml
Purification:	Affinity Chromatography using epitope-specific immunogen.
Conjugation:	Unconjugated
Storage:	Store the antibody undiluted at 2-8°C for one month or (in aliquots) at -20°C for longer. Avoid repeated freezing and thawing.
Stability:	Shelf life: one year from despatch.
Predicted Protein Size:	~ 50 kDa
Gene Name:	dopamine receptor D4
Database Link:	<a href="#">Entrez Gene 1815 Human P21917</a>



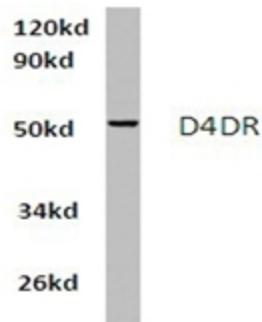
[View online »](#)

**Background:**

This gene encodes the D4 subtype of the dopamine receptor. The D4 subtype is a G-protein coupled receptor which inhibits adenylyl cyclase. It is a target for drugs which treat schizophrenia and Parkinson disease. Mutations in this gene have been associated with various behavioral phenotypes, including autonomic nervous system dysfunction, attention deficit/hyperactivity disorder, and the personality trait of novelty seeking. This gene contains a polymorphic number (2-10 copies) of tandem 48 nt repeats; the sequence shown contains four repeats. DRD4 expression has been reported in various regions of the brain as well as in adrenal gland, artery, eye, heart, kidney, placenta, spinal cord, testis, and vas deferens.

**Synonyms:**

DRD4, D(2C) dopamine receptor

**Product images:**

Western blot analysis of D4DR antibody (Cat.-No.: AP01422PU-N) in extracts from HeLa cells at 1/500 dilution.