

Product datasheet for **AP01421PU-N**

CCKBR Rabbit Polyclonal Antibody

Product data:

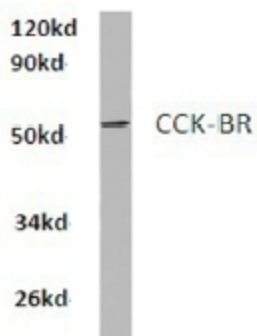
Product Type:	Primary Antibodies
Applications:	WB
Recommended Dilution:	Western Blot: 1/500-1/1000.
Reactivity:	Human, Mouse, Rat
Host:	Rabbit
Clonality:	Polyclonal
Specificity:	This antibody detects endogenous levels of CCK-BR protein. (region surrounding Leu54)
Formulation:	Phosphate buffered saline (PBS), pH~7.2 with 0.05% Sodium Azide as preservative State: Aff - Purified State: Liquid purified Ig fraction (> 95% (by SDS-PAGE))
Concentration:	1.0 mg/ml
Purification:	Affinity Chromatography using epitope-specific immunogen
Conjugation:	Unconjugated
Storage:	Store the antibody undiluted at 2-8°C for one month or (in aliquots) at -20°C for longer. Avoid repeated freezing and thawing.
Stability:	Shelf life: one year from despatch.
Predicted Protein Size:	~52 kDa
Gene Name:	cholecystokinin B receptor
Database Link:	Entrez Gene 887 Human P32239
Background:	CCKBR is a G protein coupled receptor for gastrin and cholecystokinin (CCK), regulatory peptides of the brain and gastrointestinal tract. This protein is a type B gastrin receptor, which has a high affinity for both sulfated and nonsulfated CCK analogs and is found principally in the central nervous system and the gastrointestinal tract. A misspliced transcript variant including an intron has been observed in cells from colorectal and pancreatic tumors. CCKBR is most abundant in brain and stomach but it can also be found in colon, pancreas, thyroid, and various cancers.



[View online »](#)

Synonyms: CCKB Receptor, Cholecystokinin type B receptor, CCK-BR, CCKBR, CCKRB, Cholecystokinin-2 receptor, CCK2-R

Product images:



Western blot analysis of CCK-BR antibody (Cat.-No.: AP01421PU-N) in Hela whole cell lysate at 1/500 dilution.