

Product datasheet for **AP01420PU-M**

beta 3 Adrenergic Receptor (ADRB3) Rabbit Polyclonal Antibody

Product data:

Product Type:	Primary Antibodies
Applications:	WB
Recommended Dilution:	Western Blot: 1/500-1/1000.
Reactivity:	Human, Mouse, Rat
Host:	Rabbit
Clonality:	Polyclonal
Immunogen:	Synthetic peptide, corresponding to amino acids 250-300 of Human AR- β 3.
Specificity:	AR- β 3 antibody detects endogenous levels of AR- β 3 protein (region surrounding Leu291).
Formulation:	Phosphate buffered saline (PBS) with 0.05% sodium azide, approx. pH 7.2. State: Aff - Purified State: Liquid purified Ig fraction
Concentration:	1.0 mg/ml
Purification:	Affinity chromatography using epitope-specific immunogen and the purity is > 95% (by SDS-PAGE)
Conjugation:	Unconjugated
Storage:	Store undiluted at 2-8°C for one month or (in aliquots) at -20°C for longer. Avoid repeated freezing and thawing.
Stability:	Shelf life: one year from despatch.
Predicted Protein Size:	~ 43, 68 kDa
Gene Name:	adrenoceptor beta 3
Database Link:	Entrez Gene 155 Human P13945

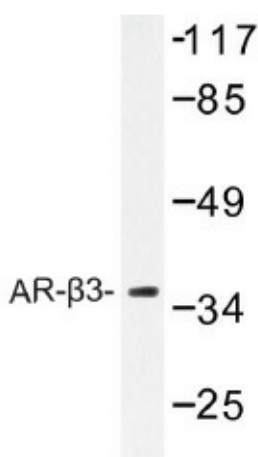
[View online »](#)

Background:

The members of the G-protein-coupled receptor family are distinguished by their slow transmitting response to ligand binding. These seven transmembrane proteins include the adrenergic, serotonin and dopamine receptors. The effect of the signaling molecule can be excitatory or inhibitory depending on the type of receptor to which it binds. β -adrenergic bound to adrenaline activates adenylyl cyclase, while α 2-adrenergic receptor bound to adrenaline inhibits adenylyl cyclase. Like the α 2-adrenergic receptor, serotonin receptor functions are also mediated by G proteins that inhibit the activity of adenylyl cyclase. The serotonin receptors have been classified into several categories and they are designated 5-HT1, 5-HT2, 5-HT3, 5-HT4, 5-HT5, 5-HT6 and 5-HT7. The 5-HT1 receptors have further been subdivided into 5-HT1A, 5-HT1B, 5-HT1C, 5-HT1D, 5-HT1E and 5-HT1F receptors.

Synonyms:

ADRB3, ADRB3R, B3AR, Beta-3 adrenoceptor

Product images:


Western blot (WB) analysis of AR- β 3 antibody in extracts from K562 cells.