

Product datasheet for **AP01412PU-M**

NXF3 Rabbit Polyclonal Antibody

Product data:

Product Type:	Primary Antibodies
Applications:	IHC, WB
Recommended Dilution:	Western Blot: 1/500-1/1000. Immunohistochemistry on paraffin sections: 1/50-1/200.
Reactivity:	Human
Host:	Rabbit
Clonality:	Polyclonal
Specificity:	NXF3 antibody detects endogenous levels of NXF3 protein. (region surrounding asn104)
Formulation:	Phosphate buffered saline (PBS) with 0.05% sodium azide, approx. pH 7.2. State: Aff - Purified State: Liquid purified Ig fraction
Concentration:	1.0 mg/ml
Purification:	Affinity chromatography
Conjugation:	Unconjugated
Storage:	Store the antibody undiluted at 2-8°C for one month or (in aliquots) at -20°C for longer. Avoid repeated freezing and thawing.
Stability:	Shelf life: one year from despatch.
Predicted Protein Size:	~ 60 kDa
Gene Name:	nuclear RNA export factor 3
Database Link:	Entrez Gene 56000 Human Q9H4D5

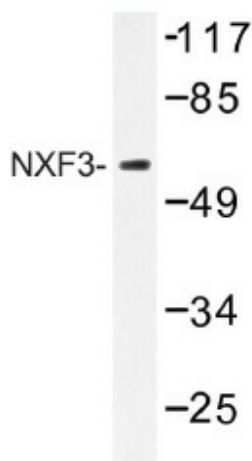
[View online »](#)

Background:

Nuclear export factor (NXF) proteins belong to an evolutionarily conserved family of proteins which are characterized by a leucine-rich-repeat domain(LRR) followed by a region known as the Nuclear Transport Factor 2 (NTF2)-like domain. The NXF family includes TAP1 (NXF1) and NXF2-5. TAP1 mediates the export of constitutive transport element (CTE)-containing simian type D retroviral RNAs through direct binding to the CTE. NXF2 binds RNA and localizes to the nuclear envelope, where it exhibits RNA export activity. NXF3 does not bind RNA nor localize to the nuclear rim, and NXF3 does not exhibit RNA export activity. NXF5 binds RNA and localizes in the form of granules in the cell body and neurites of mature hippocampal neurons. TAP1, NXF2 and NXF5 form heterodimers with RNA nuclear export-associated protein p15 (NXT). The human NXF gene cluster maps to Xcen-NXF5-NXF2-NXF4-NXF3-Xqter.

Synonyms:

TAPL3

Product images:


Western blot (WB) analysis of NXF3 antibody (Cat.-No.: [AP01412PU-N]) in extracts from MCF-7 cells.