

Product datasheet for **AP01409PU-M**

ACSL6 Rabbit Polyclonal Antibody

Product data:

Product Type:	Primary Antibodies
Applications:	IHC, WB
Recommended Dilution:	Western Blot: 1/500-1/1000. Immunohistochemistry: 1/10-1/500. Immunohistochemistry on Paraffin Sections: 1/50-1/200.
Reactivity:	Human, Mouse, Rat
Host:	Rabbit
Clonality:	Polyclonal
Immunogen:	Synthetic peptide, corresponding to amino acids 500-550 of Human ACSL6.
Specificity:	This antibody detects endogenous levels of ACSL6 protein. (region surrounding Asp531)
Formulation:	Phosphate buffered saline (PBS), pH~7.2 State: Aff - Purified State: Liquid purified Ig fraction (> 95% pure by SDS-PAGE) Preservative: 0.05% Sodium Azide
Concentration:	1.0 mg/ml
Purification:	Affinity Chromatography using epitope-specific immunogen
Conjugation:	Unconjugated
Storage:	Store the antibody undiluted at 2-8°C for one month or (in aliquots) at -20°C for longer. Avoid repeated freezing and thawing.
Stability:	Shelf life: one year from despatch.
Predicted Protein Size:	~78 kDa
Gene Name:	acyl-CoA synthetase long-chain family member 6
Database Link:	Entrez Gene 23305 Human Q9UKU0



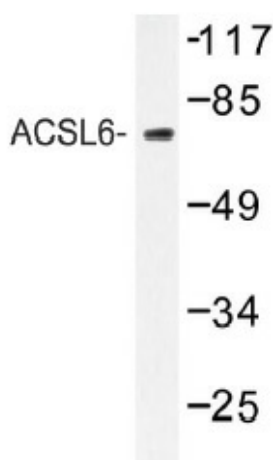
[View online »](#)

Background:

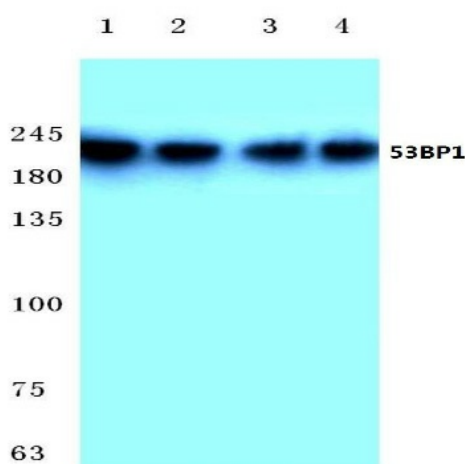
Acyl-CoA synthetases, also known as long-chain fatty-acid CoA synthases (FACL) or Palmitoyl-CoA ligases, include ACSL1-6, which are all single-pass membrane proteins localizing to the mitochondrion, microsome or peroxisome. ACSL proteins are important for synthesis of cellular lipids and for β -oxidation degradation. Specifically, ACSL proteins catalyze the activation of long-chain fatty acids to acyl-CoAs, which can be metabolized to form CO₂, triacylglycerol (TAG), phospholipids (PL) and cholesteryl esters (CE). ACSL6 has been shown to be an ETV6 fusion partner gene in a recurrent t(5;12) (q31;p13) translocation in a patient with refractory anemia with excess blasts (RAEB) with basophilia, a patient with acute myelogenous leukemia (AML) with eosinophilia, and a patient with acute eosinophilic leukemia (AEL).

Synonyms:

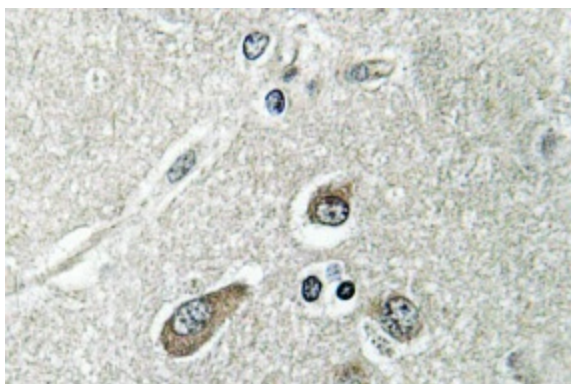
ACS2, FACL6, KIAA0837, LACS5

Product images:


Western blot (WB) analysis of ACSL6 (D531) antibody in extracts from COLO/Jurkat cells.



Western blot (WB) analysis of ACSL6 (D531) antibody at 1/500 dilution: Lane 1: HepG2 cell lysate. Lane 2: Mouse brain tissue lysate. Lane 3: Rat brain tissue lysate.



Immunohistochemistry (IHC) analyzes of ACSL6 (D531) antibody in paraffin-embedded human brain tissue.