

Product datasheet for **AP01407PU-N**

REM (REM1) Rabbit Polyclonal Antibody

Product data:

Product Type:	Primary Antibodies
Applications:	ELISA, IF, IHC, WB
Recommended Dilution:	Western blot: 1/500 - 1/1000. Immunofluorescence: 1/50 - 1/200. Immunohistochemistry on Paraffin Sections: 1/50 - 1/200.
Reactivity:	Human, Mouse, Rat
Host:	Rabbit
Clonality:	Polyclonal
Immunogen:	Synthetic peptide, corresponding to amino acids 50-100 of Human Rad GTPase.
Specificity:	This antibody detects endogenous levels of Rad GTPase protein. (region surrounding Leu80)
Formulation:	Phosphate buffered saline (PBS), pH 7.2. State: Aff - Purified State: Liquid purified Ig fraction (>95% by SDS-PAGE) Preservative: 0.05% Sodium Azide
Concentration:	1.0 mg/ml
Purification:	Affinity Chromatography using epitope-specific immunogen
Conjugation:	Unconjugated
Storage:	Store undiluted at 2-8°C for one month or (in aliquots) at -20°C for longer. Avoid repeated freezing and thawing.
Stability:	Shelf life: one year from despatch.
Predicted Protein Size:	~ 33 kDa
Gene Name:	RRAD and GEM like GTPase 1
Database Link:	Entrez Gene 19700 Mouse Entrez Gene 366232 Rat Entrez Gene 28954 Human O75628



[View online »](#)

Background:

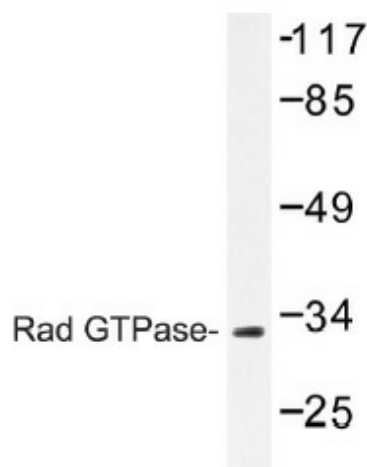
The Ras-encoded family of proteins bind GDP and GTP with high affinity. They possess a low level of intrinsic GTPase activity that increases more than 100-fold when interacting with cytosolic GTPase activating protein (GAP). Ras family members include H-Ras, K-Ras, N-Ras, M-Ras, R-Ras, ERas, Rheb, TC 21, RASL11B and Rad (Ras associated with diabetes) GTPase. Rad GTPase is a GTP-binding protein that is similar to Ras but has unique features. Unlike other small GTPases, Rad GTPase lacks typical prenylation motifs at its C terminus. The Rad GTPase enzyme binds calmodulin, inhibits vascular lesion formation, has low intrinsic GTPase activity and cannot be stimulated by any known GAP molecules. Rad GTPase is expressed in skeletal muscle, cardiac muscle and lung tissues and is overexpressed in the skeletal muscle tissue of individuals with type II diabetes.

Synonyms:

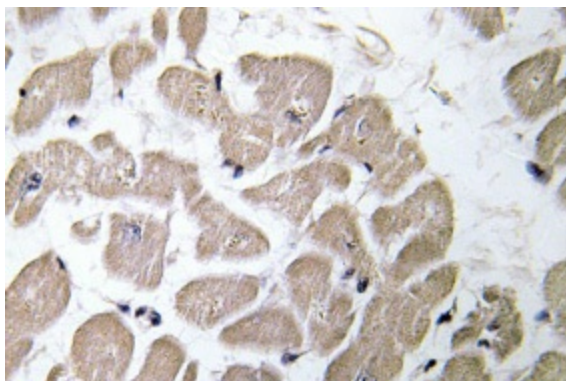
GES, REM

Protein Families:

Druggable Genome

Product images:


Western blot (WB) analysis of Rad GTPase antibody in extracts from HeLa cells.



Immunohistochemistry (IHC) analyzes of Rad GTPase antibody in paraffin-embedded human heart tissue