

Product datasheet for **AP01406PU-N**

ERAS Rabbit Polyclonal Antibody

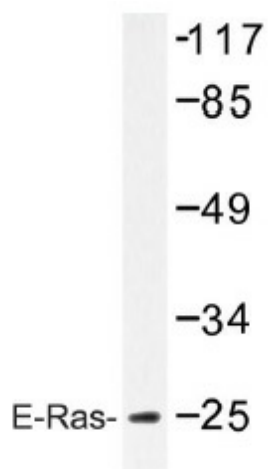
Product data:

Product Type:	Primary Antibodies
Applications:	IF, WB
Recommended Dilution:	Western Blot: 1/500-1/1000. Immunofluorescence: 1/50-1/200.
Reactivity:	Human
Host:	Rabbit
Clonality:	Polyclonal
Specificity:	E-Ras antibody detects endogenous levels of E-Ras protein. (region surrounding Cys226)
Formulation:	Phosphate buffered saline (PBS) with 0.05% sodium azide, approx. pH 7.2. State: Aff - Purified State: Liquid purified Ig fraction
Concentration:	1.0 mg/ml
Purification:	Affinity chromatography
Conjugation:	Unconjugated
Storage:	Store the antibody undiluted at 2-8°C for one month or (in aliquots) at -20°C for longer. Avoid repeated freezing and thawing.
Stability:	Shelf life: one year from despatch.
Predicted Protein Size:	~ 25 kDa
Gene Name:	ES cell expressed Ras
Database Link:	Entrez Gene 3266 Human Q7Z444
Background:	ERAS belongs to the small GTPase superfamily. Ras family. Ras proteins bind GDP/GTP and possess intrinsic GTPase activity. The ERas gene is expressed in embryonic stem (ES) cells and promotes their in vitro proliferation and tumorigenicity. ERas-null ES cells maintain pluripotency but show significantly reduced growth and tumorigenicity, which are rescued by expression of ERas complementary DNA or by activated phosphatidylinositol-3-OH kinase.
Synonyms:	GTPase ERas, E-Ras, HRASP
Protein Families:	Druggable Genome



[View online »](#)

Product images:



Western blot (WB) analysis of E-Ras antibody (Cat.-No.: AP01406PU-N) in extracts from Jurkat cells.