

Product datasheet for **AP01405PU-M**

GRB 14 (GRB14) Rabbit Polyclonal Antibody

Product data:

Product Type:	Primary Antibodies
Applications:	IHC, WB
Recommended Dilution:	Western Blot: 1/500-1/1000. Immunohistochemistry on paraffin sections: 1/50-1/200.
Reactivity:	Human, Mouse, Rat
Host:	Rabbit
Clonality:	Polyclonal
Specificity:	GRB14 antibody detects endogenous levels of GRB14 protein. (region surrounding Asp123)
Formulation:	Phosphate buffered saline (PBS) with 0.05% sodium azide, approx. pH 7.2 State: Aff - Purified State: Liquid purified Ig fraction
Concentration:	1.0 mg/ml
Purification:	Affinity chromatography
Conjugation:	Unconjugated
Storage:	Store the antibody undiluted at 2-8°C for one month or (in aliquots) at -20°C for longer. Avoid repeated freezing and thawing.
Stability:	Shelf life: one year from despatch.
Predicted Protein Size:	~ 61 kDa
Gene Name:	growth factor receptor bound protein 14
Database Link:	Entrez Gene 50915 Mouse Entrez Gene 58844 Rat Entrez Gene 2888 Human Q14449



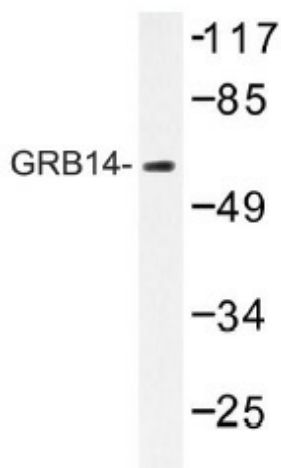
[View online »](#)

Background:

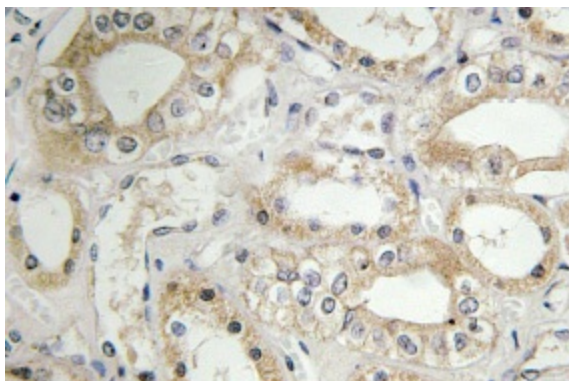
Many growth factors function by binding receptors with intrinsic tyrosine kinase activity. Signaling by such receptors involves a series of intermediates characterized by SH2 domains that bind tyrosine phosphorylated receptors by a direct interaction between the SH2 domain and specific phosphotyrosine-containing receptor sequences. GRB7, a SH2 domain protein, has a single SH2 domain at its C-terminal, a central region with similarity to Ras GAP and a proline-rich N terminus. A related SH2 domain-containing protein, GRB10, exhibits a high degree of homology with GRB7. GRB10 undergoes serine but not tyrosine phosphorylation in response to EGF treatment, but appears to bind to the EGF receptor poorly. An additional member of the GRB7 family, designated GRB14, contains a pleckstrin homology domain in its central region and a carboxy terminal SH2 domain.

Synonyms:

GRB14 adapter protein

Product images:


Western blot (WB) analysis of GRB14 antibody (Cat.-No.: [AP01405PU-N]) in extracts from HUVEC cells.



Immunohistochemistry (IHC) analyzes of GRB14 antibody (Cat.-No.: [AP01405PU-N]) in paraffin-embedded human kidney tissue.