

## Product datasheet for **AP01402PU-S**

### ALDOB Rabbit Polyclonal Antibody

#### Product data:

Product Type:	Primary Antibodies
Applications:	ELISA, IHC, WB
Recommended Dilution:	<b>Western blot:</b> 1/500-1/1000. <b>Immunohistochemistry on paraffin sections</b> 1/50-1/200.
Reactivity:	Human, Mouse, Rat
Host:	Rabbit
Clonality:	Polyclonal
Specificity:	This antibody detects endogenous levels of Aldolase B protein. (region surrounding Trp148)
Formulation:	Phosphate buffered saline (PBS), pH~7.2 with 0.05% Sodium Azide as preservative State: Aff - Purified State: Liquid purified Ig fraction (> 95% pure by SDS-PAGE)
Concentration:	1.0 mg/ml
Purification:	Affinity Chromatography using epitope-specific immunogen
Conjugation:	Unconjugated
Storage:	Store the antibody undiluted at 2-8°C for one month or (in aliquots) at -20°C for longer. Avoid repeated freezing and thawing.
Stability:	Shelf life: one year from despatch.
Predicted Protein Size:	~45 kDa
Gene Name:	aldolase, fructose-bisphosphate B
Database Link:	<a href="#">Entrez Gene 229 Human P05062</a>



[View online »](#)

**Background:**

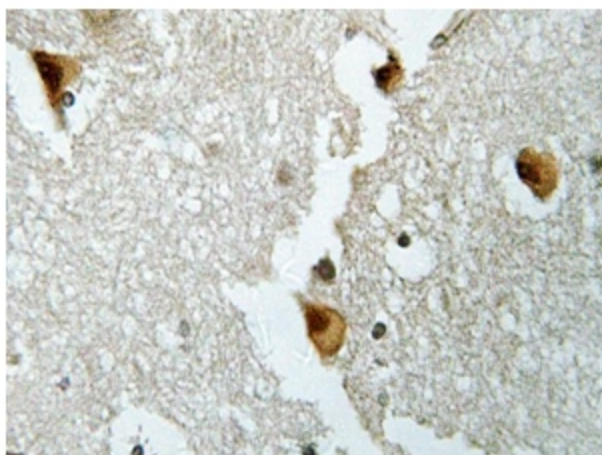
Fructose 1,6-bisphosphate Aldolase catalyses the reversible condensation of glycerone-P and glyceraldehyde 3-phosphate into fructose 1,6-bisphosphate. Fructose 1,6-bisphosphate Aldolase exists as three forms, the muscle-specific Aldolase A, the liver-specific Aldolase B, and the brain-specific Aldolase C. Aldolase A, B, and C arose from a common ancestral gene, from which Aldolase B first diverged. Aldolase A is one of the most highly conserved enzymes known, with only about 2% of the residues changing per 100 million years. Aldolase B is regulated by the hormones insulin and glucagons and has been implicated in hereditary fructose intolerance disease. Aldolase C is 36 kDa polypeptide that is exclusively expressed in Purkinje cells. Aldolase C-positive Purkinje cells are organized in the cerebellum as stripes or bands that run from anterior to posterior across the cerebellum and alternate with bands of Aldolase C-negative Purkinje cells.

**Synonyms:**

Liver-type aldolase

**Product images:**

Western blot analysis of Aldolase B antibody (Cat.-No.: [AP01402PU-N]) in extracts from A549 cells at 1/500 dilution.



Immunohistochemistry analyzes of Aldolase B antibody (Cat.-No.: [AP01402PU-N]) in paraffin-embedded Human brain tissue.