

## Product datasheet for **AP01401PU-N**

### **KDEL3 Rabbit Polyclonal Antibody**

#### **Product data:**

Product Type:	Primary Antibodies
Applications:	IHC, WB
Recommended Dilution:	<b>Western Blot:</b> 1/500-1/1000. <b>Immunohistochemistry on paraffin sections:</b> 1/50-1/200.
Reactivity:	Human, Mouse
Host:	Rabbit
Clonality:	Polyclonal
Specificity:	KDEL Receptor 3 antibody detects endogenous levels of KDEL Receptor 3 protein. (region surrounding Leu95)
Formulation:	Phosphate buffered saline (PBS) with 0.05% sodium azide, approx. pH 7.2. State: Aff - Purified State: Liquid purified Ig fraction
Concentration:	1.0 mg/ml
Purification:	Affinity chromatography
Conjugation:	Unconjugated
Storage:	Store the antibody undiluted at 2-8°C for one month or (in aliquots) at -20°C for longer. Avoid repeated freezing and thawing.
Stability:	Shelf life: one year from despatch.
Predicted Protein Size:	~ 28 kDa
Gene Name:	KDEL endoplasmic reticulum protein retention receptor 3
Database Link:	<a href="#">Entrez Gene 105785 Mouse</a> <a href="#">Entrez Gene 11015 Human</a> <a href="#">O43731</a>



[View online »](#)

**Background:**

Soluble proteins in the endoplasmic reticulum (ER) contain a specific carboxy terminal sequence KDEL (Lys-Asp-Glu-Leu), and include the coat proteins required for vesicle budding from the ER, proteins that form retrograde vesicles on post-ER compartments, and integral membrane proteins that target vesicles to their correct destination. The retention of these soluble proteins in the ER depends on the interaction of the KDEL sequence with the corresponding KDEL receptor, also designated ERD2, in the Golgi apparatus. When KDEL proteins reach the Golgi complex, they are recognized by the KDEL receptor and transported retrograde in COPI-coated vesicles back to the ER. The small GTPase ADP-ribosylation factor 1 (ARF1), a regulator of vesicle transport, interacts with the KDEL receptor.

**Synonyms:**

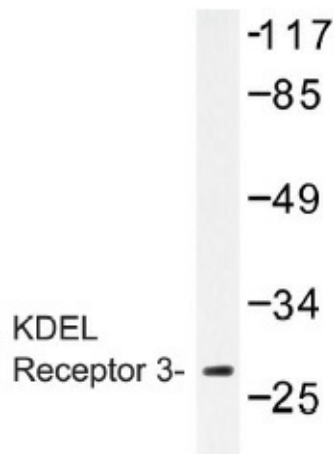
ERD2L3

**Protein Families:**

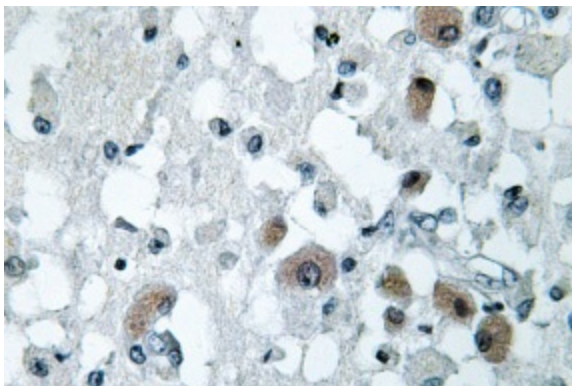
Druggable Genome, Transmembrane

**Protein Pathways:**

Vibrio cholerae infection

**Product images:**


Western blot (WB) analysis of KDEL Receptor 3 antibody (Cat.-No.: AP01401PU-N) in extracts from 3T3 cells.



Immunohistochemistry (IHC) analyzes of KDEL Receptor 3 antibody (Cat.-No.: AP01401PU-N) in paraffin-embedded human brain tissue.