

Product datasheet for **AP01400PU-N**

Epsin 2 (EPN2) Rabbit Polyclonal Antibody

Product data:

Product Type:	Primary Antibodies
Applications:	WB
Recommended Dilution:	Western Blot: 1/500-1/1000.
Reactivity:	Human, Mouse, Rat
Host:	Rabbit
Clonality:	Polyclonal
Specificity:	Epsin 2 antibody detects endogenous levels of Epsin 2 protein. (region surrounding Leu304)
Formulation:	Phosphate buffered saline (PBS) with 0.05% sodium azide, approx. pH 7.2. State: Aff - Purified State: Liquid purified Ig fraction
Concentration:	1.0 mg/ml
Purification:	Affinity chromatography
Conjugation:	Unconjugated
Storage:	Store the antibody undiluted at 2-8°C for one month or (in aliquots) at -20°C for longer. Avoid repeated freezing and thawing.
Stability:	Shelf life: one year from despatch.
Predicted Protein Size:	~ 68 kDa
Gene Name:	epsin 2
Database Link:	Entrez Gene 13855 Mouse Entrez Gene 60443 Rat Entrez Gene 22905 Human O95208



[View online »](#)

Background:

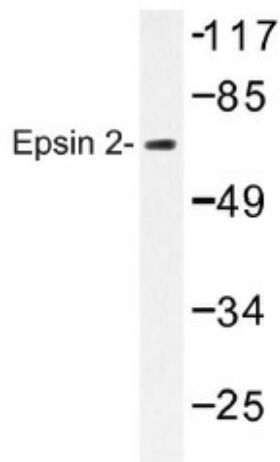
Elucidation of the mechanism by which receptor tyrosine kinases (RTKs) modulate cellular physiology in response to stimuli is critical to the understanding of growth regulation. Miscues in RTK signaling pathways can result in cellular transformation and ultimately in cancer. Two novel EGF receptor substrates designated EGF-receptor pathway substrates 8 and 15, or Eps8 and Eps15, have been described. Epsin is a 90 kDa binding partner to Eps15. Both epsin and Eps15 have an ubiquitous tissue distribution but are concentrated in presynaptic nerve terminals specialized for the Clathrin-mediated endocytosis of synaptic vesicles. Disruption of epsin function blocks Clathrin-mediated endocytosis. Epsin along with its binding partner Eps15 is proposed to be involved in the assistance of Clathrin coat rearrangement during Clathrin coated pit invagination. Epsin 2 and epsin 2a are also associated with Clathrin-mediated endocytosis and are enriched in the brain in the peri-Golgi region.

Synonyms:

EPN2, KIAA1065

Protein Pathways:

Endocytosis

Product images:

Western blot (WB) analysis of Epsin 2 antibody (Cat.-No.: AP01400PU-N) in extracts from HepG2 cells.