

## Product datasheet for **AP01398PU-N**

### EFEMP2 Rabbit Polyclonal Antibody

#### Product data:

Product Type:	Primary Antibodies
Applications:	IF, IHC, WB
Recommended Dilution:	<b>Western Blot:</b> 1/500-1/1000. <b>Immunofluorescence:</b> 1/50-1/200. <b>Immunohistochemistry on Paraffin Sections:</b> 1/50-1/200.
Reactivity:	Human
Host:	Rabbit
Clonality:	Polyclonal
Specificity:	This antibody detects endogenous levels of Fibulin-4 protein. (region surrounding Asp123)
Formulation:	PBS, pH 7.2 State: Aff - Purified State: Liquid purified Ig fraction (> 95% by SDS-PAGE) Preservative: 0.05% sodium azide
Concentration:	1.0 mg/ml
Purification:	Affinity chromatography
Conjugation:	Unconjugated
Storage:	Store the antibody undiluted at 2-8°C for one month or (in aliquots) at -20°C for longer. Avoid repeated freezing and thawing.
Stability:	Shelf life: one year from despatch.
Predicted Protein Size:	~50 kDa
Gene Name:	EGF containing fibulin like extracellular matrix protein 2
Database Link:	<a href="#">Entrez Gene 30008 Human</a> <a href="#">O95967</a>



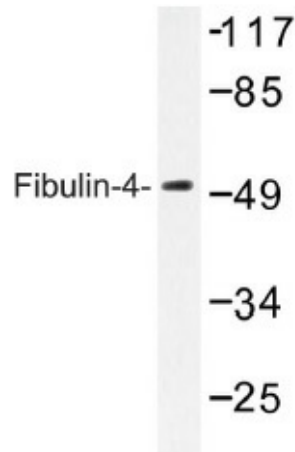
[View online »](#)

**Background:**

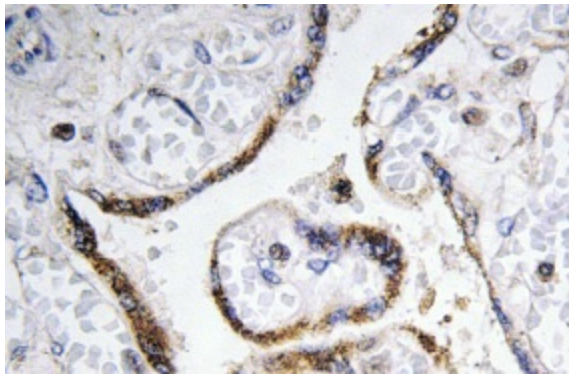
A large number of extracellular matrix proteins have been found to contain variations of the epidermal growth factor (EGF) domain and have been implicated in functions as diverse as blood coagulation, activation of complement and determination of cell fate during development. The protein encoded by this gene contains four EGF2 domains and six calcium binding EGF2 domains. This gene is necessary for elastic fiber formation and connective tissue development. Defects in this gene are cause of an autosomal recessive cutis laxa syndrome.

**Synonyms:**

Fibulin 4, EFEMP2, FBLN4, UNQ200/PRO226, Protein UPH1

**Product images:**

Western blot (WB) analysis of Fibulin-4 antibody (Cat.-No.: AP01398PU-N) in extracts from K562 cells.



Immunohistochemistry (IHC) analyzes of Fibulin-4 antibody (Cat.-No.: AP01398PU-N) in paraffin-embedded human placenta tissue.