

Product datasheet for **AP01397PU-S**

INSL4 Rabbit Polyclonal Antibody

Product data:

Product Type:	Primary Antibodies
Applications:	IF, IHC, WB
Recommended Dilution:	Western Blot: 1/500-1/1000. Immunofluorescence: 1/50-1/200. Immunohistochemistry obn Paraffin Sections: 1/50-1/200.
Reactivity:	Human
Host:	Rabbit
Clonality:	Polyclonal
Specificity:	INSL4 antibody detects endogenous levels of INSL4 protein. (region surrounding Leu79)
Formulation:	Phosphate buffered saline (PBS), pH~7.2 with 0.05% Sodium Azide as preservative. State: Aff - Purified State: Liquid purified Ig fraction (> 95% pure by SDS-PAGE).
Concentration:	1.0 mg/ml
Purification:	Affinity Chromatography using epitope-specific immunogen.
Conjugation:	Unconjugated
Storage:	Store the antibody undiluted at 2-8°C for one month or (in aliquots) at -20°C for longer. Avoid repeated freezing and thawing.
Stability:	Shelf life: one year from despatch.
Predicted Protein Size:	~19 kDa
Gene Name:	insulin like 4
Database Link:	Entrez Gene 3641 Human Q14641



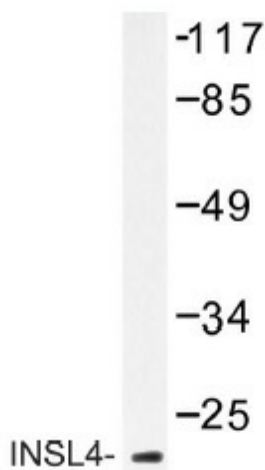
[View online »](#)

Background:

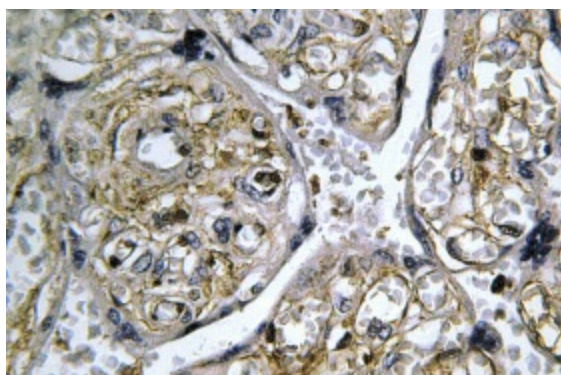
Insulin is a secreted peptide hormone that elicits metabolic effects such as increases in glucose uptake and glycogen synthesis leading to a decrease in blood glucose concentration. Insulin is first formed as a precursor molecule, preproinsulin, which is later cleaved to proinsulin and finally to the mature insulin hormone. Insulin-like peptides (INSL proteins), also designated Relaxinlike factors, are members of the insulin family, which regulate cell growth, metabolism and tissue-specific functions. INSL1-7 are mostly secreted proteins that are expressed mainly in testis, placenta, uterus or prenatal tissues. INSL4 is a 139 amino acid secreted protein expressed in the placenta, uterus and in fetal perichondrium. It may play an important role in the regulation of bone formation and in trophoblast development.

Synonyms:

Placentin

Product images:


Western blot (WB) analysis of INSL4 antibody (Cat.-No.: [AP01397PU-N]) in extracts from HT-29 cells.



Immunohistochemistry (IHC) analysis of INSL4 antibody (Cat.-No.: [AP01397PU-N]) in paraffin-embedded human placenta tissue.