

Product datasheet for **AP01395PU-S**

DNAJB11 Rabbit Polyclonal Antibody

Product data:

Product Type:	Primary Antibodies
Applications:	ELISA, IHC, WB
Recommended Dilution:	Western Blot: 1/500-1/1000. Immunohistochemistry on paraffin sections: 1/50-1/200.
Reactivity:	Human, Mouse, Rat
Host:	Rabbit
Clonality:	Polyclonal
Specificity:	ERdj3 antibody detects endogenous levels of ERdj3 protein. (region surrounding Lys66)
Formulation:	Phosphate buffered saline (PBS) with 0.05% sodium azide, approx. pH 7.2. State: Aff - Purified State: Liquid purified Ig fraction
Concentration:	1.0 mg/ml
Purification:	Affinity chromatography
Conjugation:	Unconjugated
Storage:	Store the antibody undiluted at 2-8°C for one month or (in aliquots) at -20°C for longer. Avoid repeated freezing and thawing.
Stability:	Shelf life: one year from despatch.
Predicted Protein Size:	~ 40 kDa
Gene Name:	Dnaj heat shock protein family (Hsp40) member B11
Database Link:	Entrez Gene 67838 Mouse Entrez Gene 360734 Rat Entrez Gene 51726 Human Q9UBS4



[View online »](#)

Background:

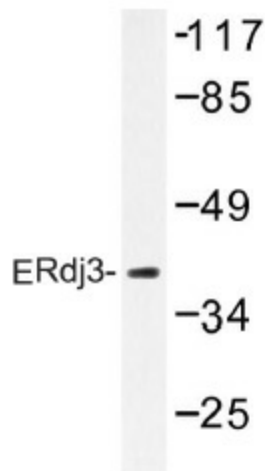
Members of the heat shock protein 40 (HSP 40) family of proteins all contain a highly conserved J domain that associates with HSP 70 and regulates the function of HSP 70 by activating its adenosine triphosphatase activity. ERdj3, an HSP 40 chaperone, is expressed in the ER lumen, where it interacts with BiP, a molecule involved in retrotranslocating proteins out of the ER. ERdj3 also associates with several other protein substrates, including unfolded light chains, a nonsecreted Ig light chain mutant and a VSV-G ts045 mutant. Shiga toxin (Stx) is a bacterial tool that enzymatically inactivates the 28S rRNA, inhibiting protein synthesis of infected cells. Stx also interacts with ERdj3 and Sec 61 to form a complex through which proteins are retrotranslocated to the cytoplasm. ERdj3 may play a role in the ER quality control system.

Synonyms:

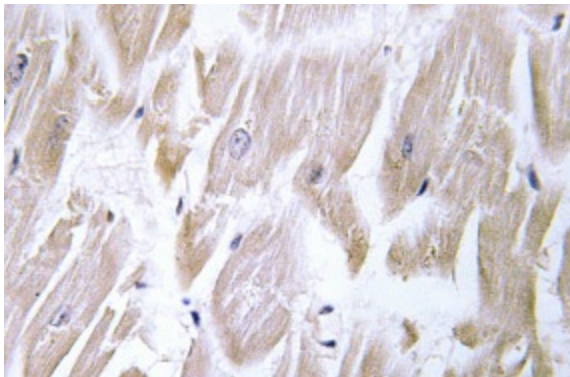
EDJ, ERJ3, PSEC0121, ERj3p, ERdj3, HEDJ, hDj9, PWP1-interacting protein 4, APOBEC1-binding protein 2

Protein Families:

Transmembrane

Product images:

Western blot (WB) analysis of ERdj3 antibody (Cat.-No.: [AP01395PU-N]) in extracts from HeLa cells.



Immunohistochemistry (IHC) analyzes of ERdj3 antibody (Cat.-No.: [AP01395PU-N]) in paraffin-embedded human heart tissue.