

## Product datasheet for **AP01393PU-S**

### CHSY3 Rabbit Polyclonal Antibody

#### Product data:

Product Type:	Primary Antibodies
Applications:	IF, IHC, WB
Recommended Dilution:	<b>Western Blot:</b> 1/500-1/1000. <b>Immunohistochemistry on paraffin sections:</b> 1/50-1/200. <b>Immunofluorescence:</b> 1/50-1/200.
Reactivity:	Human, Mouse, Rat
Host:	Rabbit
Clonality:	Polyclonal
Immunogen:	Synthetic peptide, corresponding to amino acids 640-690 of Human CHSY2.
Specificity:	This antibody detects endogenous levels of CHSY2 protein. (region surrounding Arg671)
Formulation:	PBS, approx. pH 7.2 State: Aff - Purified State: Liquid purified Ig fraction (> 95% pure by SDS-PAGE) Preservative: 15 mM Sodium Azide
Concentration:	1.0 mg/ml
Purification:	Affinity-Chromatography using epitope-specific immunogen
Conjugation:	Unconjugated
Storage:	Store the antibody undiluted at 2-8°C for one month or (in aliquots) at -20°C for longer. Avoid repeated freezing and thawing.
Stability:	Shelf life: one year from despatch.
Predicted Protein Size:	~ 85 kDa
Gene Name:	chondroitin sulfate synthase 3
Database Link:	<a href="#">Entrez Gene 78923 Mouse</a> <a href="#">Entrez Gene 291577 Rat</a> <a href="#">Entrez Gene 337876 Human</a> <a href="#">Q70JA7</a>



[View online »](#)

**Background:**

Chondroitin sulfate synthases (CHSYs) synthesize chondroitin sulfate, a glycosaminoglycan expressed on the surface of most cells and in extracellular matrices. Glycosaminoglycan chains are covalently linked to various of core protein families and regulate many biologic processes, including extracellular matrix deposition, cell proliferation and recognition, and morphogenesis. The CHSY family includes CHSY1, CHSY2 and CHSY3. CHSY1 and CHSY3 display both glucuronyltransferase and N-acetylgalactosaminyltransferase activities, while CHSY2 is required for chondroitin polymerizing activity. CHSY2 localizes to the Golgi apparatus and is expressed ubiquitously, with highest expression observed in pancreas, ovary, brain, heart, skeletal muscle, colon, kidney, liver, stomach, small intestine and placenta.

**Synonyms:**

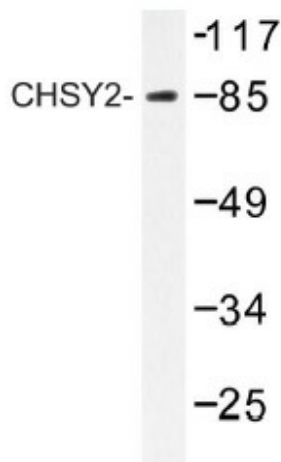
Chondroitin sulfate synthase 3, Chondroitin synthase 2, CHSY2, CSS3, ChSy-2

**Protein Families:**

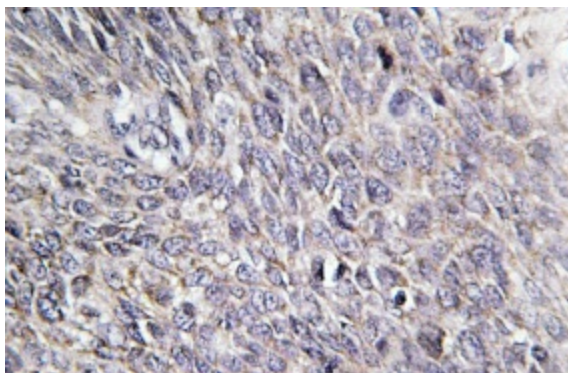
Transmembrane

**Protein Pathways:**

Chondroitin sulfate biosynthesis, Metabolic pathways

**Product images:**

Western blot (WB) analysis of CHSY2 antibody (Cat.-No.: [AP01393PU-N]) in extracts from LOVO cells



Immunohistochemistry (IHC) analyzes of CHSY2 antibody (Cat.-No.: [AP01393PU-N]) in paraffin-embedded human cervix carcinoma tissue.