

## Product datasheet for **AP01390PU-N**

### CLN6 Rabbit Polyclonal Antibody

#### Product data:

|                         |  |
|-------------------------|--|
| Product Type:           | Primary Antibodies   |
| Applications:           | IHC, WB  |
| Recommended Dilution:   | <b>Western Blot:</b> 1/500-1/1000.<br><b>Immunohistochemistry on paraffin sections:</b> 1/50-1/200.  |
| Reactivity:             | Human  |
| Host:                   | Rabbit   |
| Clonality:              | Polyclonal   |
| Specificity:            | CLN6 antibody detects endogenous levels of CLN6 protein. (region surrounding asn258)   |
| Formulation:            | Phosphate buffered saline (PBS) with 0.05% sodium azide, approx. pH 7.2.<br>State: Aff - Purified<br>State: Liquid purified Ig fraction  |
| Concentration:          | 1.0 mg/ml  |
| Purification:           | Affinity chromatography  |
| Conjugation:            | Unconjugated   |
| Storage:                | Store the antibody undiluted at 2-8°C for one month or (in aliquots) at -20°C for longer.<br>Avoid repeated freezing and thawing.  |
| Stability:              | Shelf life: one year from despatch.  |
| Predicted Protein Size: | ~ 40 kDa   |
| Gene Name:              | ceroid-lipofuscinosis, neuronal 6, late infantile, variant   |
| Database Link:          | <a href="#">Entrez Gene 54982 Human</a><br><a href="#">Q9NWW5</a>  |
| Background:             | CLN6, a 311-amino acid protein, has 7 predicted transmembrane domains and is conserved across vertebrates. The CLN6 protein localizes to the endoplasmic reticulum but contributes to lysosomal function. Mutations in the CLN6 gene cause variant late-onset infantile neuronal ceroid lipofuscinosis (vLINCL), a lysosomal storage disorder marked by progressive mental deterioration and blindness; part of a group of severe inherited neurodegenerative disorders affecting children wherein lysosomes accumulate storage material, causing the death of neurons. CLN6 is one of eight proteins, including CLN1-8, that are associated with NCL. |

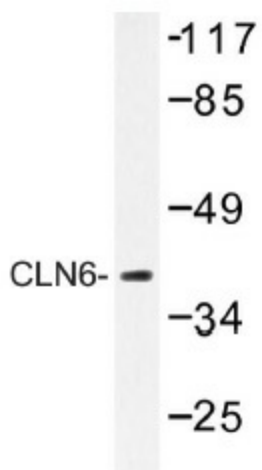


[View online »](#)

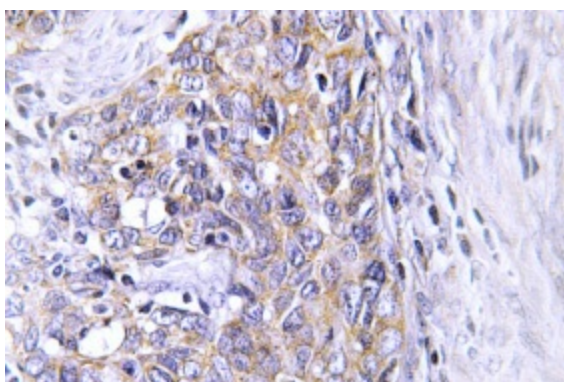
Synonyms: FLJ20561; HsT18960; nclf

Protein Families: Transmembrane

### Product images:



Western blot (WB) analysis of CLN6 antibody (Cat.-No.: AP01390PU-N) in extracts from HeLa cells.



Immunohistochemistry (IHC) analyzes of CLN6 antibody (Cat.-No.: AP01390PU-N) in paraffin-embedded human cervix carcinoma tissue.