

Product datasheet for **AP01390PU-M**

CLN6 Rabbit Polyclonal Antibody

Product data:

| | |
|-------------------------|--|
| Product Type: | Primary Antibodies |
| Applications: | IHC, WB |
| Recommended Dilution: | Western Blot: 1/500-1/1000. Immunohistochemistry on paraffin sections: 1/50-1/200. |
| Reactivity: | Human |
| Host: | Rabbit |
| Clonality: | Polyclonal |
| Specificity: | CLN6 antibody detects endogenous levels of CLN6 protein. (region surrounding asn258) |
| Formulation: | Phosphate buffered saline (PBS) with 0.05% sodium azide, approx. pH 7.2. State: Aff - Purified State: Liquid purified Ig fraction |
| Concentration: | 1.0 mg/ml |
| Purification: | Affinity chromatography |
| Conjugation: | Unconjugated |
| Storage: | Store the antibody undiluted at 2-8°C for one month or (in aliquots) at -20°C for longer. Avoid repeated freezing and thawing. |
| Stability: | Shelf life: one year from despatch. |
| Predicted Protein Size: | ~ 40 kDa |
| Gene Name: | ceroid-lipofuscinosis, neuronal 6, late infantile, variant |
| Database Link: | Entrez Gene 54982 Human Q9NWW5 |
| Background: | CLN6, a 311-amino acid protein, has 7 predicted transmembrane domains and is conserved across vertebrates. The CLN6 protein localizes to the endoplasmic reticulum but contributes to lysosomal function. Mutations in the CLN6 gene cause variant late-onset infantile neuronal ceroid lipofuscinosis (vLINCL), a lysosomal storage disorder marked by progressive mental deterioration and blindness; part of a group of severe inherited neurodegenerative disorders affecting children wherein lysosomes accumulate storage material, causing the death of neurons. CLN6 is one of eight proteins, including CLN1-8, that are associated with NCL. |

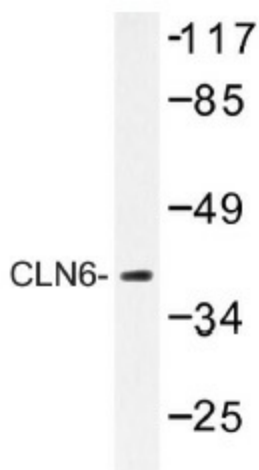


[View online »](#)

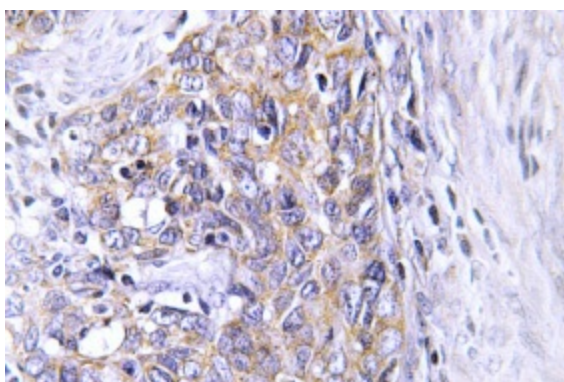
Synonyms: FLJ20561; HsT18960; nclf

Protein Families: Transmembrane

Product images:



Western blot (WB) analysis of CLN6 antibody (Cat.-No.: [AP01390PU-N]) in extracts from HeLa cells.



Immunohistochemistry (IHC) analyzes of CLN6 antibody (Cat.-No.: [AP01390PU-N]) in paraffin-embedded human cervix carcinoma tissue.