

## Product datasheet for **AP01386PU-M**

### **BMP8A Rabbit Polyclonal Antibody**

#### **Product data:**

Product Type:	Primary Antibodies
Applications:	IF, IHC, WB
Recommended Dilution:	<b>Western Blot:</b> 1/500-1/1000. <b>Immunohistochemistry on paraffin sections</b> 1/50-1/200. <b>Immunofluorescence:</b> 1/50-1/200.
Reactivity:	Human
Host:	Rabbit
Clonality:	Polyclonal
Specificity:	BMP-8A antibody detects endogenous levels of BMP-8A protein. (region surrounding Gln299)
Formulation:	Phosphate buffered saline (PBS), pH~7.2 containing 0.05% Sodium Azide as preservative. State: Aff - Purified State: Liquid purified Ig fraction (> 95% pure by SDS-PAGE).
Concentration:	1.0 mg/ml
Purification:	Affinity Chromatography using epitope-specific immunogen.
Conjugation:	Unconjugated
Storage:	Store the antibody undiluted at 2-8°C for one month or (in aliquots) at -20°C for longer. Avoid repeated freezing and thawing.
Stability:	Shelf life: one year from despatch.
Predicted Protein Size:	~ 45 kDa
Gene Name:	bone morphogenetic protein 8a
Database Link:	<a href="#">Entrez Gene 353500 Human Q7Z5Y6</a>



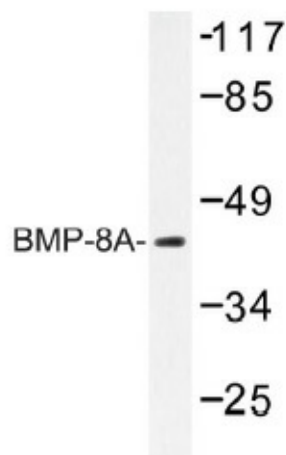
[View online »](#)

**Background:**

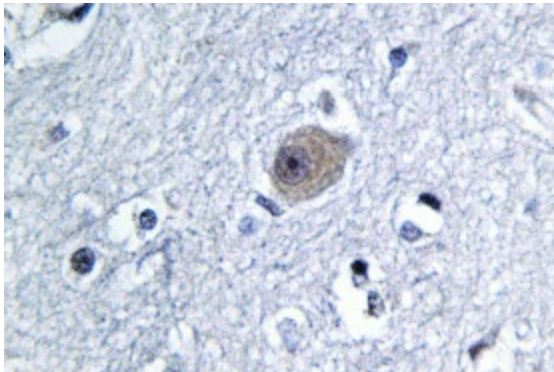
Bone morphogenic proteins (BMPs) are members of the TGF $\beta$  superfamily. BMPs are involved in the induction of cartilage and bone formation. In vivo studies have shown that BMP-2 (also designated BMP-2A) and BMP-3 can independently induce cartilage formation. Smad3 association with the TGF $\beta$  receptor complex and Smad1 translocation to the nucleus are observed after the addition of BMP-4 (also designated BMP-2B), suggesting that BMP-4 may play a role in activation of the Smad pathway. BMP-5, BMP-6 and BMP-7 all share high sequence homology with BMP-2, indicating that they each may be able to induce cartilage formation. BMP-8 is thought to be involved in early development, as detectable expression has not been found in adult organs. Two BMP-8 proteins exist, namely BMP-8A and BMP-8B (also designated OP-2), and are encoded by two distinct genes.

**Synonyms:**

Bone morphogenetic protein 8A, BMP-8A

**Product images:**


Western blot (WB) analysis of BMP-8A antibody (Cat.-No.: [AP01386PU-N]) in extracts from COLO cells.



Immunohistochemistry (IHC) analyzes of BMP-8A antibody (Cat.-No.: [AP01386PU-N]) in paraffin-embedded human brain tissue.