

## Product datasheet for **AP01383PU-N**

### ARFIP1 Rabbit Polyclonal Antibody

#### Product data:

Product Type:	Primary Antibodies
Applications:	IF, IHC, WB
Recommended Dilution:	<b>Western Blot:</b> 1/500-1/1000. <b>Immunofluorescence:</b> 1/50-1/200. <b>Immunohistochemistry on Paraffin Sections:</b> 1/50-1/200.
Reactivity:	Human, Mouse, Rat
Host:	Rabbit
Clonality:	Polyclonal
Immunogen:	Synthetic peptide, corresponding to amino acids 300-350 of Human Arfaptin 1.
Specificity:	This antibody detects endogenous levels of Arfaptin-1 protein. (region surrounding Lys314)
Formulation:	Phosphate buffered saline (PBS), pH~7.2 State: Aff - Purified State: Liquid purified Ig fraction (> 95% pure by SDS-PAGE) Preservative: 0.05% Sodium Azide
Concentration:	1.0 mg/ml
Purification:	Affinity Chromatography using epitope-specific immunogen
Conjugation:	Unconjugated
Storage:	Store undiluted at 2-8°C for one month or (in aliquots) at -20°C for longer. Avoid repeated freezing and thawing.
Stability:	Shelf life: one year from despatch.
Predicted Protein Size:	~40 kDa
Gene Name:	ADP ribosylation factor interacting protein 1
Database Link:	<a href="#">Entrez Gene 27236 Human P53367</a>



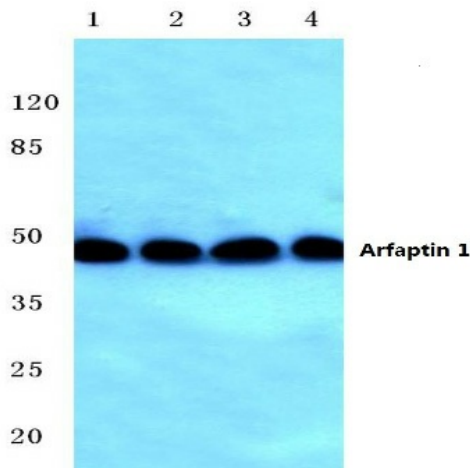
[View online »](#)

**Background:**

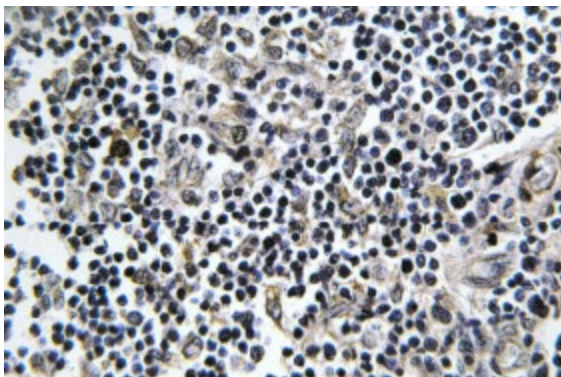
Arfaptin 1 is an ARF binding protein that inhibits PLD activation, vesicular trafficking and secretion. In the present report, we show that arfaptin 1 interacts with 'high speed' membranes independently of ARF. However, addition of myristoylated ARF3 (myrARF3) increases the association of arfaptin 1 with the membranes, suggesting that arfaptin 1 and ARF form a complex on the Golgi. Utilizing several deletion mutants of arfaptin 1 it is shown that the association of arfaptin 1 with myrARF3 is mediated via two binding sites on arfaptin 1. These two domains are needed for arfaptin 1 inhibition of PLD activation by myrARF3 in vitro.

**Synonyms:**

ARFIP1

**Product images:**


Western blot analysis of Arfaptin-1 antibody Cat.-No AP01383PU-N at 1/500 in: Lane 1: HeLa whole cell lysate. Lane 2: SP2/0 whole cell lysate. Lane 3: PC12 whole cell lysate. Lane 4: Rat muscle tissue lysate.



Immunohistochemistry analysis of Arfaptin-1 antibody Cat.-No AP01383PU-N in paraffin-embedded human thymus gland tissue.