

Product datasheet for **AP01378PU-S**

RPS20 Rabbit Polyclonal Antibody

Product data:

Product Type:	Primary Antibodies
Applications:	IF, IHC, WB
Recommended Dilution:	Western Blot: 1/500-1/1000. Immunofluorescence: 1/50-1/200. Immunohistochemistry on Paraffin Sections: 1/50-1/200.
Reactivity:	Human, Mouse, Rat
Host:	Rabbit
Clonality:	Polyclonal
Specificity:	This antibody detects endogenous levels of Ribosomal Protein S20 protein. (region surrounding Lys67)
Formulation:	Phosphate buffered saline (PBS), pH~7.2 State: Aff - Purified State: Liquid purified Ig fraction (>95% by SDS-PAGE) Preservative: 0.05% Sodium Azide
Concentration:	1.0 mg/ml
Purification:	Affinity Chromatography using epitope-specific immunogen
Conjugation:	Unconjugated
Storage:	Store the antibody undiluted at 2-8°C for one month or (in aliquots) at -20°C for longer. Avoid repeated freezing and thawing.
Stability:	Shelf life: one year from despatch.
Predicted Protein Size:	~13 kDa
Gene Name:	ribosomal protein S20
Database Link:	Entrez Gene 67427 Mouse Entrez Gene 122772 Rat Entrez Gene 6224 Human P60866



[View online »](#)

Background:

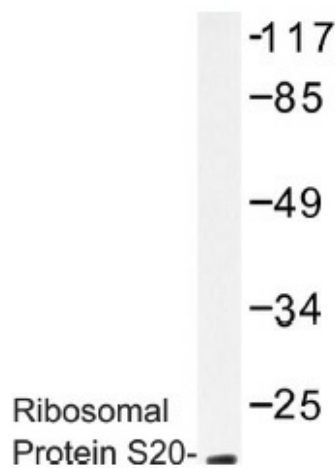
Mammalian ribosomal proteins are encoded by multigene families that consist of processed pseudogenes and one functional intron-containing gene within their coding regions. Ribosomal Protein S20, also known as RPS20, is a 119 amino acid cytoplasmic protein that is a component of the 40S ribosomal subunit. Co-transcribed with the small nucleolar RNA gene U54, Ribosomal Protein S20 is a primary binding protein (it binds independently to its target protein) that interacts with both the 5' and 3' minor domains of 16S ribosomal RNA (rRNA). Through its interactions with 16S rRNA, Ribosomal Protein S20 is thought to play a key role in nucleating the assembly of the 30S ribosomal subunit. Like most ribosomal protein-coding genes, the gene encoding Ribosomal Protein S20 is dispersed throughout the genome and exists as multiple processed pseudogenes.

Synonyms:

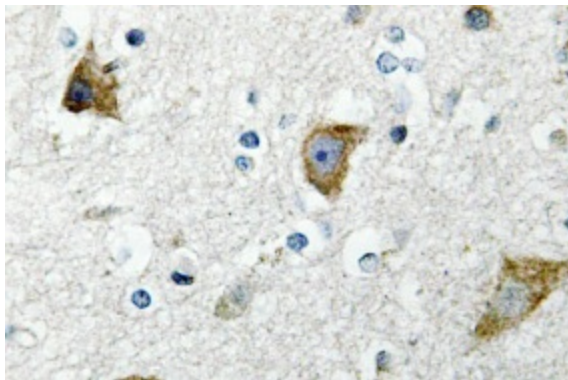
40S ribosomal protein S20

Protein Pathways:

Ribosome

Product images:


Western blot analysis of Ribosomal Protein S20 antibody (Cat.-No [AP01378PU-N]) in extracts from HUVEC cells.



Immunohistochemistry analysis of Ribosomal Protein S20 antibody (Cat.-No [AP01378PU-N]) in paraffin-embedded human brain tissue.