

Product datasheet for **AP01375PU-N**

FGF22 Rabbit Polyclonal Antibody

Product data:

| | |
|-------------------------|--|
| Product Type: | Primary Antibodies |
| Applications: | IF, IHC, WB |
| Recommended Dilution: | Western Blot: 1/500-1/1000. Immunofluorescence: 1/50-1/200. Immunohistochemistry on paraffin sections: 1/50-1/200. |
| Reactivity: | Human, Mouse, Rat |
| Host: | Rabbit |
| Clonality: | Polyclonal |
| Specificity: | FGF-22 antibody detects endogenous levels of FGF-22 protein. (region surrounding Ala96) |
| Formulation: | Phosphate buffered saline (PBS) with 0.05% sodium azide, approx. pH 7.2. State: Aff - Purified State: Liquid purified Ig fraction |
| Concentration: | 1.0 mg/ml |
| Purification: | Affinity chromatography |
| Conjugation: | Unconjugated |
| Storage: | Store the antibody undiluted at 2-8°C for one month or (in aliquots) at -20°C for longer. Avoid repeated freezing and thawing. |
| Stability: | Shelf life: one year from despatch. |
| Predicted Protein Size: | ~ 20 kDa |
| Gene Name: | fibroblast growth factor 22 |
| Database Link: | Entrez Gene 67112 Mouse Entrez Gene 170579 Rat Entrez Gene 27006 Human Q9HCT0 |



[View online »](#)

Background:

Acidic and basic fibroblast growth factors (FGFs) are members of a family of multifunctional polypeptide growth factors that stimulate proliferation of cells of mesenchymal, epithelial and neuroectodermal origin. Like other growth factors, FGFs act by binding and activating specific cell surface receptors. These receptors usually contain an extracellular ligand-binding region containing three immunoglobulin-like domains, a transmembrane domain and a cytoplasmic tyrosine kinase domain. Fibroblast growth factor-22 (FGF-22) is a secreted protein whose gene is localized to human chromosome 19p13.3. FGF-22 is expressed preferentially in the inner root sheath of the hair follicle, suggesting that it is important in hair development.

Synonyms:

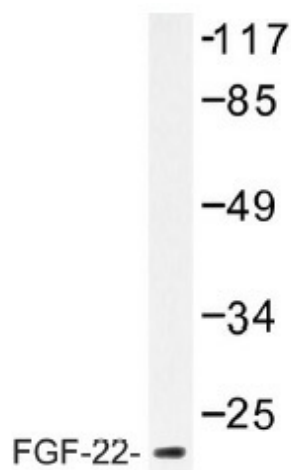
Fibroblast growth factor 22, FGF-22

Protein Families:

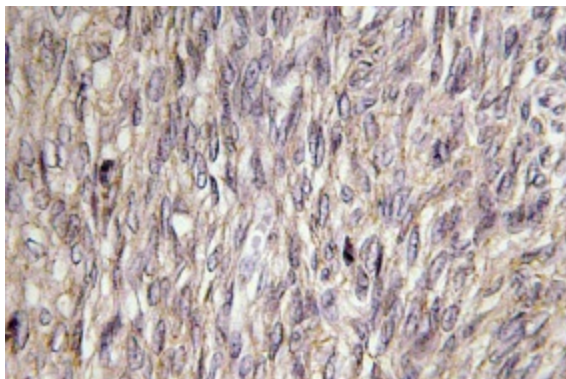
Secreted Protein

Protein Pathways:

MAPK signaling pathway, Melanoma, Pathways in cancer, Regulation of actin cytoskeleton

Product images:

Western blot (WB) analysis of FGF-22 antibody (Cat.-No.: AP01375PU-N) in extracts from Jurkat cells.



Immunohistochemistry (IHC) analyzes of FGF-22 antibody (Cat.-No.: AP01375PU-N) in paraffin-embedded human ovary tissue