

Product datasheet for **AP01372PU-N**

TPX2 Rabbit Polyclonal Antibody

Product data:

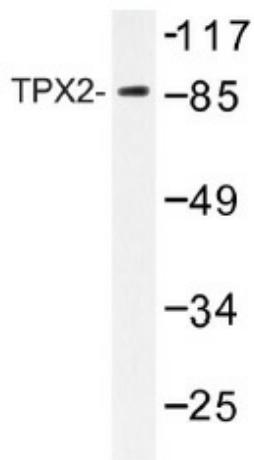
Product Type:	Primary Antibodies
Applications:	IHC, WB
Recommended Dilution:	Western Blot: 1/500-1/1000. Immunohistochemistry on paraffin sections: 1/50-1/200.
Reactivity:	Human, Mouse
Host:	Rabbit
Clonality:	Polyclonal
Specificity:	TPX2 antibody detects endogenous levels of TPX2 protein. (region surrounding Gln330)
Formulation:	Phosphate buffered saline (PBS) with 15 mM sodium azide, approx. pH 7.2. State: Aff - Purified State: Liquid purified Ig
Concentration:	1.0 mg/ml
Purification:	Affinity chromatography
Conjugation:	Unconjugated
Storage:	Store the antibody undiluted at 2-8°C for one month or (in aliquots) at -20°C for longer. Avoid repeated freezing and thawing.
Stability:	Shelf life: one year from despatch.
Gene Name:	TPX2, microtubule nucleation factor
Database Link:	Entrez Gene 22974 Human Q9ULW0
Background:	TPX2 (targeting protein for Xklp2) is a microtubule-associated protein involved in targeting the motor protein Xklp2 to microtubules. Ran-GTP activates TPX2 for the chromatin-induced microtubule assembly during M phase. Aurora-A kinase associates with TPX2 at the spindle apparatus and may regulate TPX2 via phosphorylation during the spindle assembly. TPX2 appears to play a structural role in spindle formation. TPX2 activates Eg2 in a microtubule-dependent manner by stimulating the phosphorylation and kinase activity of Eg2. TPX2 is inactivated by binding to importin α , a nuclear import factor. Finally, the suppression of TPX2 with RNA interference causes defects in microtubule organization during mitosis.



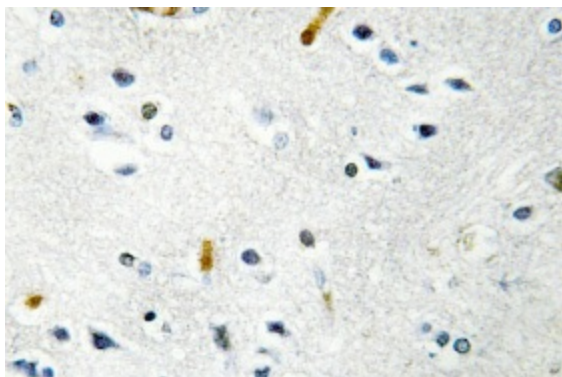
[View online »](#)

Synonyms: DIL-2, C20orf1, C20orf2, HCA519

Product images:



Western blot (WB) analysis of TPX2 antibody (Cat.-No.: AP01372PU-N) in extracts from Jurkat.



Immunohistochemistry (IHC) analyzes of TPX2 antibody (Cat.-No.: AP01372PU-N) in paraffin-embedded human brain tissue