

Product datasheet for **AP01371PU-N**

SSBP1 Rabbit Polyclonal Antibody

Product data:

Product Type:	Primary Antibodies
Applications:	IF, IHC, WB
Recommended Dilution:	Western Blot: 1/500-1/1000. Immuofluorescence: 1/50-1/200. Immunohistochemistry on Paraffin Sections: 1/50-1/200.
Reactivity:	Human, Mouse, Rat
Host:	Rabbit
Clonality:	Polyclonal
Specificity:	This antibody detects endogenous levels of SSBP1 protein.
Formulation:	Phosphate buffered saline (PBS), pH~7.2 with 0.05% Sodium Azide as preservative. State: Aff - Purified State: Liquid purified Ig fraction (> 95% pure by SDS-PAGE).
Concentration:	1.0 mg/ml
Purification:	Affinity Chromatography using epitope-specific immunogen.
Conjugation:	Unconjugated
Storage:	Store the antibody undiluted at 2-8°C for one month or (in aliquots) at -20°C for longer. Avoid repeated freezing and thawing.
Stability:	Shelf life: one year from despatch.
Predicted Protein Size:	~17 kDa
Gene Name:	single stranded DNA binding protein 1
Database Link:	Entrez Gene 54304 Rat Entrez Gene 381760 Mouse Entrez Gene 6742 Human Q04837
Background:	The single-stranded-DNA-binding proteins (SSBs) are essential for DNA function in prokaryotic and eukaryotic cells, mitochondria, phages and viruses. Mitochondrial single-stranded DNA-binding protein (mtSSB or SSBP1) is necessary for mtDNA replication. SSBP1 is a homotetramer that binds preferentially and cooperatively to single-stranded DNA. It is localized to the mitochondria in normal and neoplastic human tissue of different origin, function, and differentiation, and is likely involved in mitochondrial DNA replication.



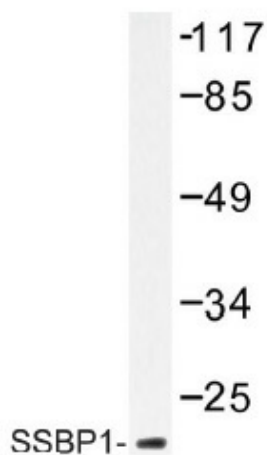
[View online »](#)

Synonyms: SSBP, Mt-SSB, mtSSB

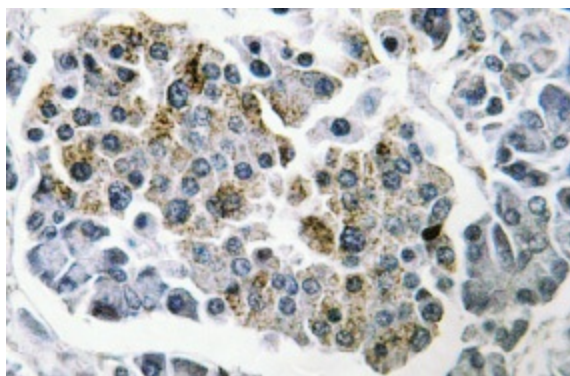
Protein Families: Druggable Genome

Protein Pathways: DNA replication, Homologous recombination, Mismatch repair

Product images:



Western blot (WB) analysis of SSBP1 antibody (Cat.-No.: AP01371PU-N) in extracts from HUVEC.



Immunohistochemistry (IHC) analyzes of SSBP1 antibody (Cat.-No.: AP01371PU-N) in paraffin-embedded human pancreas tissue