

Product datasheet for **AP01367PU-N**

DRP2 Rabbit Polyclonal Antibody

Product data:

Product Type:	Primary Antibodies
Applications:	IF, IHC, WB
Recommended Dilution:	Western Blot: 1/500-1/1000. Immunohistochemistry on paraffin sections 1/50-1/200. Immunofluorescence: 1/50-1/200.
Reactivity:	Human, Mouse, Rat
Host:	Rabbit
Clonality:	Polyclonal
Specificity:	This antibody detects endogenous levels of DRP-2 protein. (region surrounding Pro510)
Formulation:	Phosphate buffered saline (PBS), pH~7.2 containing 0.05% Sodium Azide as preservative. State: Aff - Purified State: Liquid purified Ig fraction (> 95% pure by SDS-PAGE).
Concentration:	1.0 mg/ml
Purification:	Affinity Chromatography using epitope-specific immunogen.
Conjugation:	Unconjugated
Storage:	Store the antibody undiluted at 2-8°C for one month or (in aliquots) at -20°C for longer. Avoid repeated freezing and thawing.
Stability:	Shelf life: one year from despatch.
Gene Name:	dystrophin related protein 2
Database Link:	Entrez Gene 1821 Human Q13474



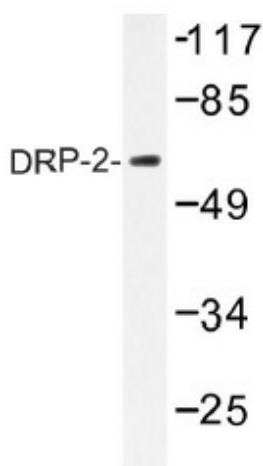
[View online »](#)

Background:

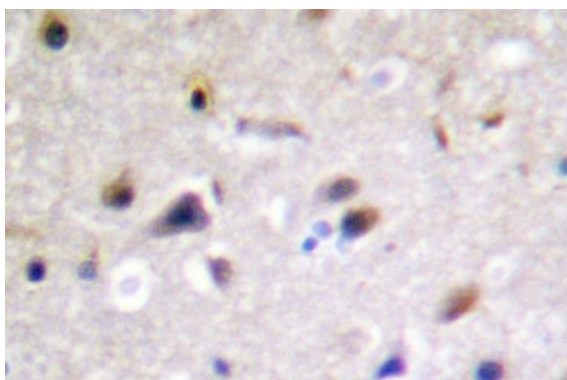
Dystrophin, utrophin and dystrophin-related protein 2 (DRP2) are Actin-binding proteins that are involved in anchoring the cytoskeleton to the plasma membrane. Dystrophin is the protein product of the Duchenne/Becker muscular dystrophy gene. Dystrophin is expressed in muscle and brain tissues, where it is localized to the inner surface of the plasma membrane. Evidence suggests that the upregulation of utrophin (also known as DRP1) can reduce the dystrophic pathology. DRP2 is principally expressed in the brain and spinal cord. Analysis of DRP2 expression in rat brain on SDS-PAGE reveals a characteristic quartet of bands from 100-120 kDa. DRP2 exhibits a punctate staining pattern of rat neuronal dendrites and in neuropil. DRP2 forms a complex with dystroglycan at the surface of myelin-forming Schwann cells and may play a role in the terminal stages of myelinogenesis in the peripheral nervous system. The gene encoding human DRP2 maps to chromosome Xq22.

Synonyms:

Dystrophin-related protein 2, DRP-2

Product images:


Western blot (WB) analysis of DRP-2 antibody (Cat.-No.: AP01367PU-N) in extracts from A549 cells treated with EGF 200ng/ml 30'.



Immunohistochemistry (IHC) analysis of DRP-2 antibody (Cat.-No.: AP01367PU-N) in paraffin-embedded human brain tissue