

Product datasheet for **AP01364PU-M**

Sodium Potassium ATPase (ATP1A1) Rabbit Polyclonal Antibody

Product data:

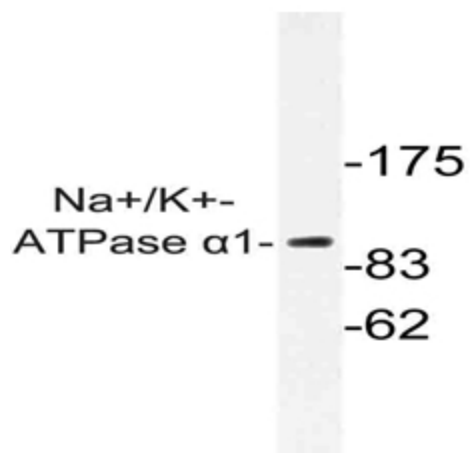
Product Type:	Primary Antibodies
Applications:	IF, WB
Recommended Dilution:	Western Blot: 1/500-1/1000. Immunofluorescence: 1/50-1/200.
Reactivity:	Human, Rat
Host:	Rabbit
Clonality:	Polyclonal
Specificity:	This antibody detects endogenous levels of Na ⁺ /K ⁺ -ATPase alpha-1 protein. (region surrounding Gly19)
Formulation:	Phosphate buffered saline (PBS), pH~7.2 containing 0.05% Sodium Azide as preservative. State: Aff - Purified State: Liquid purified Ig fraction (> 95% pure by SDS-PAGE).
Concentration:	1.0 mg/ml
Purification:	Affinity Chromatography using epitope-specific immunogen.
Conjugation:	Unconjugated
Storage:	Store the antibody undiluted at 2-8°C for one month or (in aliquots) at -20°C for longer. Avoid repeated freezing and thawing.
Stability:	Shelf life: one year from despatch.
Predicted Protein Size:	~113 kDa
Gene Name:	ATPase Na ⁺ /K ⁺ transporting subunit alpha 1
Database Link:	Entrez Gene 476 Human P05023
Background:	Na,K-ATPase is an integral membrane protein complex that hydrolyzes ATP to maintain the transmembrane gradients of Na ⁺ and K ⁺ found in most mammalian cells. The enzyme is comprised of an alpha and beta subunit. The alpha-polypeptide has been shown to be the catalytically active subunit, whereas the beta-polypeptide appears to be necessary for the assembly and transport of the sodium pump to the plasma membrane. Na,K-ATPase α1 subunit, in brain, is expressed in both neuronal and non-neuronal cells.



[View online »](#)

Synonyms: Sodium pump ATPase subunit alpha-1, Sodium/potassium-transporting ATPase subunit alpha

Product images:



Western blot (WB) analysis of ATP1A1 antibody (Cat.-No.: [AP01364PU-N]) in extracts from HeLa cells.