

Product datasheet for **AP01362PU-M**

KIR5.1 (KCNJ16) Rabbit Polyclonal Antibody

Product data:

Product Type:	Primary Antibodies
Applications:	IF, IHC, WB
Recommended Dilution:	Western Blot: 1/500-1/1000. Immunohistochemistry on Paraffin Sections: 1/50-1/200. Immunofluorescence: 1/50-1/200.
Reactivity:	Mouse, Rat
Host:	Rabbit
Clonality:	Polyclonal
Immunogen:	Synthetic peptide, corresponding to amino acids 376-428 of Human Kir5.1.
Specificity:	This antibody detects endogenous levels of Kir5.1 protein. (region surrounding asn410)
Formulation:	Phosphate buffered saline (PBS) with 0.05% sodium azide, approx. pH 7.2. State: Aff - Purified State: Liquid purified Ig fraction (> 95% pure by SDS-PAGE)
Concentration:	1.0 mg/ml
Purification:	Affinity Chromatography using epitope-specific immunogen.
Conjugation:	Unconjugated
Storage:	Store the antibody undiluted at 2-8°C for one month or (in aliquots) at -20°C for longer. Avoid repeated freezing and thawing.
Stability:	Shelf life: one year from despatch.
Predicted Protein Size:	~ 48 kDa
Gene Name:	potassium voltage-gated channel subfamily J member 16
Database Link:	Q9NPI9



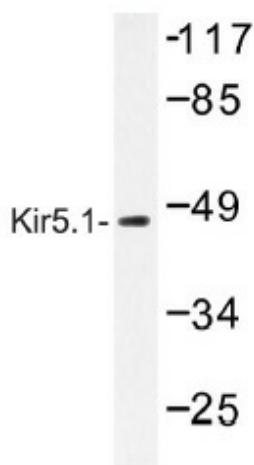
[View online »](#)

Background:

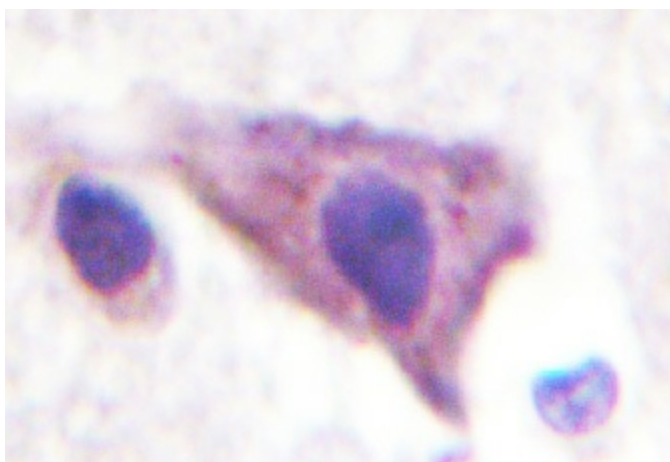
The KIR (for inwardly rectifying potassium channel) family of potassium channels possess a greater tendency to allow potassium to flow into the cell rather than out of it. KIR4.1, also known as KIR1.2, is highly expressed in brain including glial cells, astrocytes and cortical neurons. KIR4.1 is also expressed in myelin-synthesizing oligodendrocytes and is crucial to myelination in the developing nervous system. The gene encoding human KIR4.1 maps to chromosome 1. KIR4.2, also known as KIR1.3, is expressed in kidney, lung, heart, thymus and thyroid during development. The gene encoding human KIR4.2 maps to chromosome 21 in the Down syndrome chromosome region 1, and KIR4.2 may play a role in the pathogenesis of Down's syndrome. KIR5.1 forms functional channels only by coexpression with either KIR4.1 or KIR4.2 in the kidney and pancreas. The gene encoding human KIR5.1 maps to chromosome 17.

Synonyms:

KCNJ16, Inward rectifier potassium channel 16, Inward rectifier K(+) channel Kir5.1

Product images:


Western blot (WB) analysis of Kir5.1 antibody in extracts from HeLa cells.



Immunohistochemistry (IHC) analyzes of Kir5.1 antibody in paraffin-embedded human brain tissue