

## Product datasheet for **AP01361PU-M**

### KIF20A Rabbit Polyclonal Antibody

#### Product data:

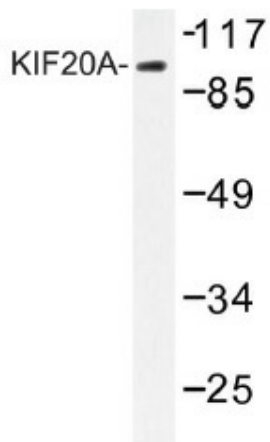
Product Type:	Primary Antibodies
Applications:	IF, IHC, WB
Recommended Dilution:	<b>Western Blot:</b> 1/500-1/1000. <b>Immunohistochemistry on paraffin sections:</b> 1/50-1/200. <b>Immunofluorescence:</b> 1/50-1/200.
Reactivity:	Human
Host:	Rabbit
Clonality:	Polyclonal
Specificity:	This antibody detects endogenous levels of KIF20A protein. (region surrounding Ile524)
Formulation:	Phosphate buffered saline (PBS), pH~7.2 with 0.02% Sodium Azide as preservative and 50% Glycerol State: Aff - Purified State: Liquid purified Ig fraction (> 95% pure by SDS-PAGE).
Concentration:	1.0 mg/ml
Purification:	Affinity Chromatography using epitope-specific immunogen.
Conjugation:	Unconjugated
Storage:	Store the antibody undiluted at 2-8°C for one month or (in aliquots) at -20°C for longer. Avoid repeated freezing and thawing.
Stability:	Shelf life: one year from despatch.
Predicted Protein Size:	~ 100 kDa
Gene Name:	kinesin family member 20A
Database Link:	<a href="#">Entrez Gene 10112 Human O95235</a>
Background:	KIF20A is a member of the kinesin-like protein family and has 1 kinesin motor domain. It interacts with guanosine triphosphate (GTP)-bound forms of RAB6A and RAB6B and may act as a motor required for the retrograde RAB6 regulated transport of Golgi membranes and associated vesicles along microtubules. KIF20A has a microtubule plus end-directed motility.



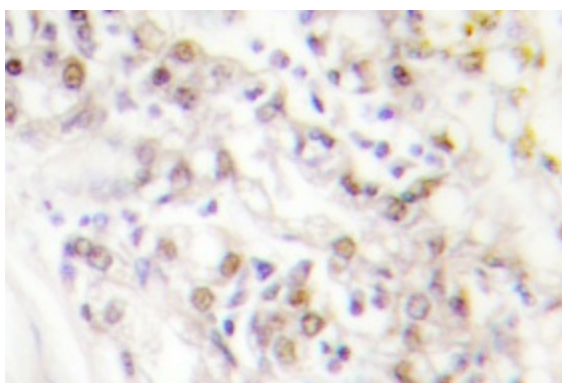
[View online »](#)

**Synonyms:** KIF20A, RAB6KIFL, Kinesin-like protein KIF20A, Rabkinesin-6, Rab6-interacting kinesin-like protein, GG10\_2

**Product images:**



Western blot (WB) analysis of KIF20A antibody (Cat.-No.: [AP01361PU-N]) in extracts from 293 cells.



Immunohistochemistry (IHC) analysis of KIF20A antibody (Cat.-No.: [AP01361PU-N]) in paraffin-embedded human breast carcinoma tissue.