

## Product datasheet for **AP01358PU-M**

### GNAZ Rabbit Polyclonal Antibody

#### Product data:

Product Type:	Primary Antibodies
Applications:	IHC, WB
Recommended Dilution:	<b>Western Blot:</b> 1/500-1/1000. <b>Immunohistochemistry on paraffin sections:</b> 1/50-1/200.
Reactivity:	Human, Mouse, Rat
Host:	Rabbit
Clonality:	Polyclonal
Specificity:	Gz- $\alpha$ antibody detects endogenous levels of Gz- $\alpha$ protein. (region surrounding Ala12)
Formulation:	Phosphate buffered saline (PBS) with 0.05% sodium azide, approx. pH 7.2. State: Aff - Purified State: Liquid purified Ig fraction
Concentration:	1.0 mg/ml
Purification:	Affinity chromatography
Conjugation:	Unconjugated
Storage:	Store the antibody undiluted at 2-8°C for one month or (in aliquots) at -20°C for longer. Avoid repeated freezing and thawing.
Stability:	Shelf life: one year from despatch.
Predicted Protein Size:	~ 41 kDa
Gene Name:	G protein subunit alpha z
Database Link:	<a href="#">Entrez Gene 14687 Mouse</a> <a href="#">Entrez Gene 25740 Rat</a> <a href="#">Entrez Gene 2781 Human</a> <a href="#">P19086</a>



[View online »](#)

**Background:**

Guanine nucleotide-binding proteins (G proteins) are involved as modulators or transducers in various transmembrane signaling systems. G proteins are composed of 3 units; alpha, beta and gamma. The alpha chain contains the guanine nucleotide binding site. G protein z alpha, encoded by the GNAZ gene, is enriched in neural tissue and differs in sequence from other G alpha subunits. Alpha Subunits are encoded in 15 genes and several transcripts are alternatively spliced. Receptors may discriminate between splice variants; whether splice variants are functionally different in regulating effectors is not known. All alpha subunits appear to be palmitoylated near the N-terminus.

**Synonyms:**

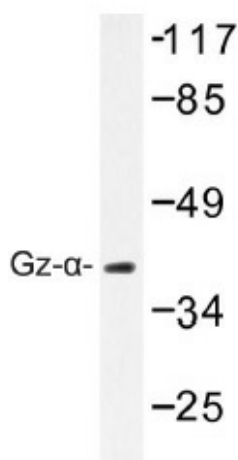
G(x) alpha chain, Gz-alpha, GNAZ

**Protein Families:**

Druggable Genome

**Protein Pathways:**

Long-term depression

**Product images:**


Western blot (WB) analysis of Gz-a antibody (Cat.-No.: [AP01358PU-N]) in extracts from COS7 cells treated with PMA 125ng/ml 30'.



Immunohistochemistry (IHC) analyzes of Gz-a antibody (Cat.-No.: [AP01358PU-N]) in paraffin-embedded human brain tissue