

## Product datasheet for **AP01353PU-M**

### **MCSF Receptor (CSF1R) Rabbit Polyclonal Antibody**

#### **Product data:**

Product Type:	Primary Antibodies
Applications:	IF, IHC, WB
Recommended Dilution:	<b>Western Blot:</b> 1/500-1/1000. <b>Immunofluorescence:</b> 1/50-1/200. <b>Immunohistochemistry on Paraffin Sections:</b> 1/50-1/200.
Reactivity:	Human, Mouse
Host:	Rabbit
Clonality:	Polyclonal
Immunogen:	Synthetic peptide, corresponding to amino acids 771-820 of Human c-Fms.
Specificity:	This antibody detects endogenous levels of CSFR protein (region surrounding asn805)
Formulation:	Phosphate buffered saline (PBS), pH~7.2 State: Aff - Purified State: Liquid purified Ig fraction (> 95% pure by SDS-PAGE) Preservative: 0.05% Sodium Azide
Concentration:	1.0 mg/ml
Purification:	Affinity Chromatography using epitope-specific immunogen
Conjugation:	Unconjugated
Storage:	Store undiluted at 2-8°C for one month or (in aliquots) at -20°C for longer. Avoid repeated freezing and thawing.
Stability:	Shelf life: one year from despatch.
Predicted Protein Size:	~ 92, 108 kDa
Gene Name:	colony stimulating factor 1 receptor
Database Link:	<u><a href="#">Entrez Gene 12978 Mouse</a></u> <u><a href="#">Entrez Gene 1436 Human</a></u> <u><a href="#">P07333</a></u>



[View online »](#)

**Background:**

c-Fms/CSF-1R is a transmembrane tyrosine kinase receptor belonging to the CSF1/PDGF receptor family. It is encoded by the c-Fms proto-oncogene and is expressed in mononuclear phagocytes, oocytes, decidual cells, trophoblastic cells and some myoblasts. It is important for growth and differentiation of myeloid cells and its function can be regulated by SLAP-2. c-Fms/CSF-1R is responsible for mediating all of the functions of M-CSF. M-CSF is a glycoprotein required for the proliferation and differentiation of mononuclear phagocytes, including osteoclasts. M-CSF has also been identified as an important mediator of the inflammatory response and can regulate the release of proinflammatory cytokines from macrophages.

**Synonyms:**

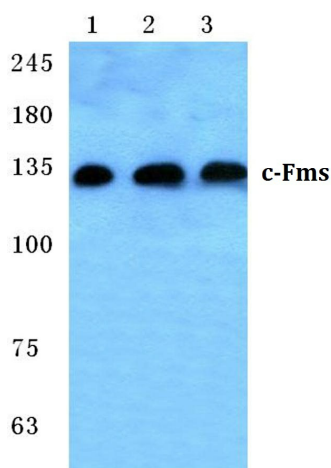
CSF-1-R, Fms proto-oncogene, c-fms, CSF1R, FMS, Macrophage colony-stimulating factor 1 receptor

**Protein Families:**

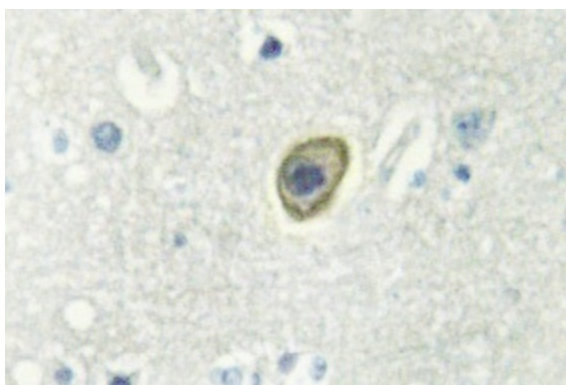
Druggable Genome, Protein Kinase, Transmembrane

**Protein Pathways:**

Cytokine-cytokine receptor interaction, Endocytosis, Hematopoietic cell lineage, Pathways in cancer

**Product images:**


Western blot (WB) analysis of c-Fms antibody (Cat.-No.: [AP01353PU-N]) at 1/500 dilution Lane 1:MCF-7 cell lysate Lane 2:sp2/0 cell lysate Lane 3:Rat liver tissue lysate



Immunohistochemistry (IHC) analyzes of CSFR antibody (Cat.-No.: [AP01353PU-N]) in paraffin-embedded human brain tissue.