

Product datasheet for **AP01352PU-M**

CD226 Rabbit Polyclonal Antibody

Product data:

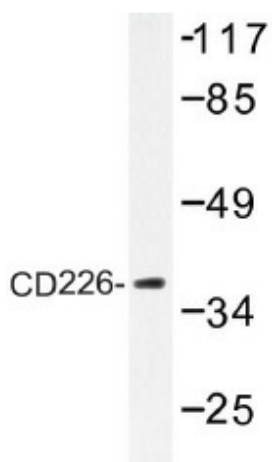
Product Type:	Primary Antibodies
Applications:	IF, WB
Recommended Dilution:	Western Blot: 1/500-1/1000. Immunofluorescence: 1/50-1/200.
Reactivity:	Human, Mouse
Host:	Rabbit
Clonality:	Polyclonal
Specificity:	CD226 antibody detects endogenous levels of CD226 protein. (region surrounding Tyr325)
Formulation:	Phosphate buffered saline (PBS) with 0.05% sodium azide, approx. pH 7.2. State: Aff - Purified State: Liquid purified Ig fraction
Concentration:	1.0 mg/ml
Purification:	Affinity chromatography
Conjugation:	Unconjugated
Storage:	Store the antibody undiluted at 2-8°C for one month or (in aliquots) at -20°C for longer. Avoid repeated freezing and thawing.
Stability:	Shelf life: one year from despatch.
Predicted Protein Size:	~ 38 kDa
Gene Name:	CD226 molecule
Database Link:	Entrez Gene 10666 Human Q15762
Background:	CD226 is a receptor expressed by peripheral blood T lymphocytes that is involved in intercellular adhesion, lymphocyte signaling, cytotoxicity and lymphokine secretion mediated by cytotoxic T lymphocytes. CD226 is broadly expressed on T cells, NK cells, platelets, monocytes and a subset of B cells. CD226 is also expressed by a subset of CD3 positive thymocytes. This antibody is reported to inhibit T and NK cell mediated cytotoxicity against tumour cell targets and to block TNF alpha and IFN gamma secretion by alloantigen-specific T-cells.



[View online »](#)

Synonyms: DNAX accessory molecule 1, DNAM-1

Product images:



Western blot (WB) analysis of CD226 antibody (Cat.-No.: [AP01352PU-N]) in extracts from 293 cells treated with PMA 125ng/ml 30'