

## Product datasheet for **AP01351PU-N**

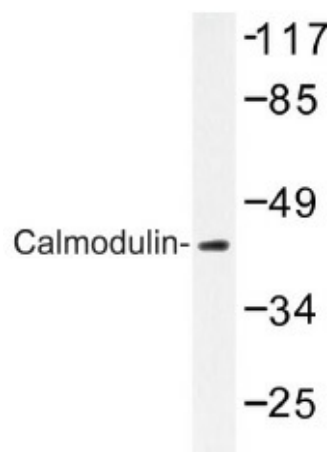
### **CALM1 Rabbit Polyclonal Antibody**

#### **Product data:**

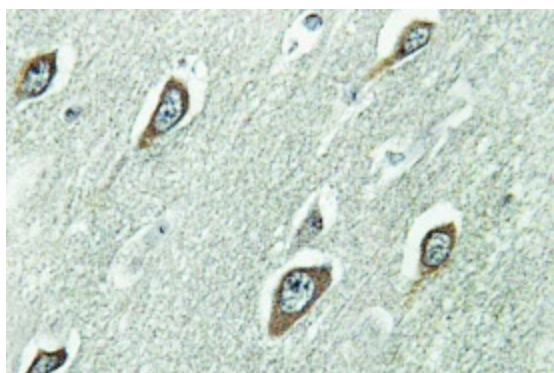
<b>Product Type:</b>	Primary Antibodies
<b>Applications:</b>	ELISA, IHC, WB
<b>Recommended Dilution:</b>	ELISA: 1:1000~1:10000. WB: 1:500~1:1000. IHC: 1:50~1:200.
<b>Reactivity:</b>	Human, Mouse, Rat
<b>Host:</b>	Rabbit
<b>Clonality:</b>	Polyclonal
<b>Specificity:</b>	Calmodulin antibody detects endogenous levels of Calmodulin protein.
<b>Formulation:</b>	Phosphate buffered saline (PBS) with 15 mM sodium azide, approx. pH 7.2. State: Aff - Purified State: Liquid purified Ig
<b>Concentration:</b>	1,0 mg/ml
<b>Purification:</b>	Affinity chromatography
<b>Conjugation:</b>	Unconjugated
<b>Storage:</b>	Store the antibody undiluted at 2-8°C for one month or (in aliquots) at -20°C for longer. Avoid repeated freezing and thawing.
<b>Stability:</b>	Shelf life: one year from despatch.
<b>Gene Name:</b>	calmodulin 1 (phosphorylase kinase, delta)
<b>Database Link:</b>	<a href="#">Entrez Gene 801 Human</a> <a href="#">P0DP23</a>
<b>Background:</b>	Calmodulin mediates the control of a large number of enzymes and other proteins by Ca(2+). Among the enzymes to be stimulated by the calmodulin Ca(2+) complex are a number of protein kinases and phosphatases. Calmodulin has four functional calcium binding sites.
<b>Synonyms:</b>	CALM1, CALM, CAM, CAM1



[View online »](#)

**Product images:**

Western blot (WB) analysis of Calmodulin antibody in extracts from NIH/3T3 cells.



Immunohistochemistry (IHC) analyzes of Calmodulin antibody in paraffin-embedded human brain tissue.