

## Product datasheet for **AP01351PU-M**

### **CALM1 Rabbit Polyclonal Antibody**

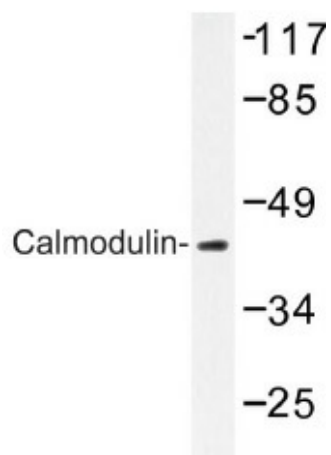
#### **Product data:**

Product Type:	Primary Antibodies
Applications:	ELISA, IHC, WB
Recommended Dilution:	ELISA: 1:1000~1:10000. WB: 1:500~1:1000. IHC: 1:50~1:200.
Reactivity:	Human, Mouse, Rat
Host:	Rabbit
Clonality:	Polyclonal
Specificity:	Calmodulin antibody detects endogenous levels of Calmodulin protein.
Formulation:	Phosphate buffered saline (PBS) with 15 mM sodium azide, approx. pH 7.2. State: Aff - Purified State: Liquid purified Ig
Concentration:	1,0 mg/ml
Purification:	Affinity chromatography
Conjugation:	Unconjugated
Storage:	Store the antibody undiluted at 2-8°C for one month or (in aliquots) at -20°C for longer. Avoid repeated freezing and thawing.
Stability:	Shelf life: one year from despatch.
Gene Name:	calmodulin 1 (phosphorylase kinase, delta)
Database Link:	<a href="#">Entrez Gene 801 Human</a> <a href="#">P0DP23</a>
Background:	Calmodulin mediates the control of a large number of enzymes and other proteins by Ca(2+). Among the enzymes to be stimulated by the calmodulin Ca(2+) complex are a number of protein kinases and phosphatases. Calmodulin has four functional calcium binding sites.
Synonyms:	CALM1, CALM, CAM, CAM1

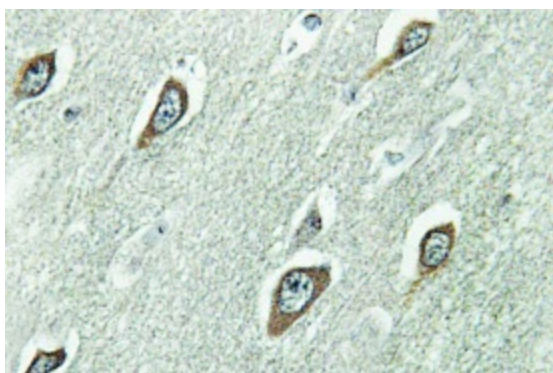


[View online »](#)

## Product images:



Western blot (WB) analysis of Calmodulin antibody in extracts from NIH/3T3 cells.



Immunohistochemistry (IHC) analysis of Calmodulin antibody in paraffin-embedded human brain tissue.