

Product datasheet for **AP01350PU-M**

PIM1 Rabbit Polyclonal Antibody

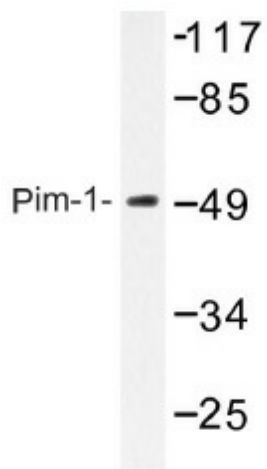
Product data:

Product Type:	Primary Antibodies
Applications:	WB
Recommended Dilution:	Western Blot: 1/500-1/1000.
Reactivity:	Human, Mouse, Rat
Host:	Rabbit
Clonality:	Polyclonal
Specificity:	This antibody detects endogenous levels of Pim-1 protein. (region surrounding Ile302)
Formulation:	Phosphate buffered saline (PBS), pH 7.2. State: Aff - Purified State: Liquid purified Ig fraction (>95% pure by SDS-PAGE). Preservative: 0.05% Sodium Azide
Concentration:	1.0 mg/ml
Purification:	Affinity Chromatography using epitope-specific immunogen.
Conjugation:	Unconjugated
Storage:	Store the antibody undiluted at 2-8°C for one month or (in aliquots) at -20°C for longer. Avoid repeated freezing and thawing.
Stability:	Shelf life: one year from despatch.
Predicted Protein Size:	~ 50 kDa
Gene Name:	Pim-1 proto-oncogene, serine/threonine kinase
Database Link:	Entrez Gene 5292 Human P11309
Background:	Pim-1 is a serine/threonine kinase that cooperates with c-Myc in lymphoid cell transformation. The expression of Pim-1 increases during the progression from early to late G1, remaining high at the G1/S boundary and G2 phases of the cell cycle. Pim-1 is regulated at both the transcriptional and translational level, and it has been shown to be induced by IL-2 stimulation. Pim-1 also plays a role in T cell differentiation, and it has been shown to stimulate c-Myc-mediated apoptosis upstream of caspase-3-like proteases.
Synonyms:	Pim-1



[View online »](#)

Product images:



Western blot (WB) analysis of Pim-1 antibody (Cat.-No.: [AP01350PU-N]) in extracts from Jurkat cells.