

## Product datasheet for **AP01348PU-S**

### p23 (PTGES3) Rabbit Polyclonal Antibody

#### Product data:

Product Type:	Primary Antibodies
Applications:	IHC, WB
Recommended Dilution:	<b>Western Blot:</b> 1/500-1/1000. <b>Immunohistochemistry on Paraffin Sections:</b> 1/50-1/200.
Reactivity:	Human, Mouse, Rat
Host:	Rabbit
Clonality:	Polyclonal
Specificity:	TEBP antibody detects endogenous levels of TEBP protein. (region surrounding Lys107)
Formulation:	Phosphate buffered saline (PBS), pH~7.2 containing 0.05% Sodium Azide as preservative. State: Aff - Purified State: Liquid purified Ig fraction (> 95% pure by SDS-PAGE).
Concentration:	1.0 mg/ml
Purification:	Affinity Chromatography using epitope-specific immunogen.
Conjugation:	Unconjugated
Storage:	Store undiluted at 2-8°C for one month or (in aliquots) at -20°C for longer. Avoid repeated freezing and thawing.
Stability:	Shelf life: one year from despatch.
Predicted Protein Size:	~ 24 kDa
Gene Name:	prostaglandin E synthase 3
Database Link:	<a href="#">Entrez Gene 10728 Human Q15185</a>



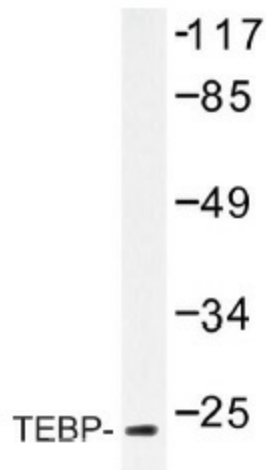
[View online »](#)

**Background:**

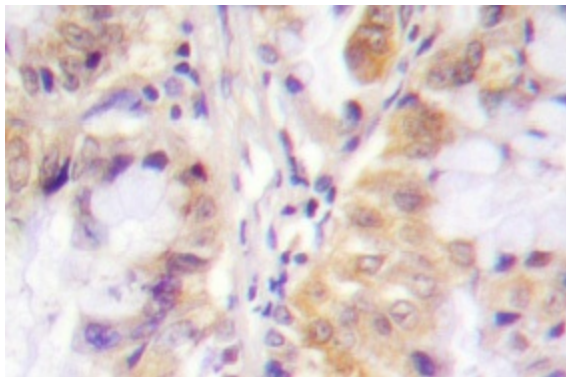
TTF-1 (Thyroid transcription factor-1, BCH, BHC, NK-2, Nkx2.1, Nkx2A, TEBP, TTF1) is a member of the Nkx2 family of homeodomain-containing transcription factors and regulates the transcriptional activity of thyroid-specific genes. TTF-1 is a 38 kDa protein that influences organogenesis and the maintenance of the differentiated phenotypes of various tissues including thyroid, lung and brain. TTF-1, which is present in the epithelium of the lung, regulates transcription of the surfactant proteins (SP) A, B, and C and is essential for lung morphogenesis. In the thyroid, TTF-1 elevates the expression of thyroid specific markers, thyroglobulin, thyroperoxidase and thyrotropin receptors. TTF-1 interacts with SRC-1 and CBP in vitro.

**Synonyms:**

Prostaglandin E synthase 3, cPGES, P23

**Product images:**

Western blot (WB) analysis of TEBP antibody (Cat.-No.: [AP01348PU-N]) in extracts from NIH/3T3 treated with EGF 200ng/ml 30'.



Immunohistochemistry (IHC) analyzes of TEBP antibody (Cat.-No.: [AP01348PU-N]) in paraffin-embedded lung carcinoma tissue.