

## Product datasheet for **AP01340PU-S**

### TAS2R1 Rabbit Polyclonal Antibody

#### Product data:

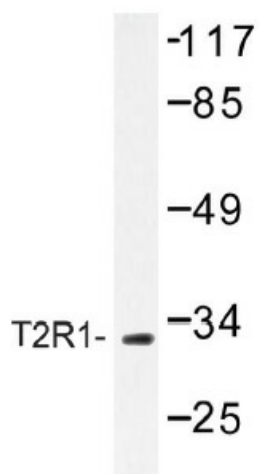
Product Type:	Primary Antibodies
Applications:	WB
Recommended Dilution:	<b>Western Blot:</b> 1/500-1/1000.
Reactivity:	Human
Host:	Rabbit
Clonality:	Polyclonal
Specificity:	T2R1 antibody detects endogenous levels of T2R1 protein. (region surrounding Asp45)
Formulation:	Phosphate buffered saline (PBS) with 0.05% sodium azide, approx. pH 7.2. State: Aff - Purified State: Liquid purified Ig fraction
Concentration:	1.0 mg/ml
Purification:	Affinity chromatography
Conjugation:	Unconjugated
Storage:	Store the antibody undiluted at 2-8°C for one month or (in aliquots) at -20°C for longer. Avoid repeated freezing and thawing.
Stability:	Shelf life: one year from despatch.
Predicted Protein Size:	~ 33 kDa
Gene Name:	taste 2 receptor member 1
Database Link:	<a href="#">Entrez Gene 50834 Human Q9NYW7</a>
Background:	The sense of taste is essential for the survival of organisms. For example, the ability to identify sweet-tasting foods enables animals to seek out food with high nutritive value, whereas the ability to identify bitter substances enables them to avoid the ingestion of potentially harmful substances. A family of integral membrane proteins are involved in taste perception and include T1R, which is involved in sweet taste perception and T2R, which is involved in bitter taste perception. Both types of taste receptors couple to various G proteins to initiate signal transduction cascades. Specifically, T2R1 is expressed in subsets of taste receptor cells of the tongue and palate epithelium and exclusively in gustducin-positive cells.



[View online »](#)

**Synonyms:** Taste receptor T2R1, TRB7

**Product images:**



Western blot (WB) analysis of T2R1 antibody (Cat. No.: [AP01340PU-N]) in extracts from MCF-7 cells.